



CONTAINER APPENDIX

HOLDER OF DOCUMENT:
MOENS PACKAGING NV, BELGIUM

APPENDIX NO.: NET28CR22B-1232/03
TEST LABORATORY: NET Emballasje- og Produkttesting AS
TEST PERFORMED BY: Therese Rummelhoff
CONTROLLED BY: Rune Fink
MANUFACTURER CLOSURE: Modulpac AB, Västergatan 16, SE-341 50 Lagan, Sweden
MANUFACTURER CONTAINER: Plastics Tmp, Av. Zénobe Gramme 31, 1300 Wavre, Belgium
APPROVAL: The Child-resistant closure is designed for reclosable packages, as child resistant and suitable for adults.

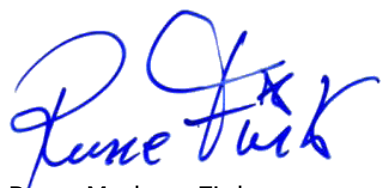


This appendix is only valid with a valid version of the certificate

TEST STANDARD: All tests are performed in accordance with NET accredited test method ATM003. The test method is accredited in accordance with NS-EN ISO/IEC 17025:2017 approved by Norsk Akkreditering and according to NS-EN ISO 8317:2015.

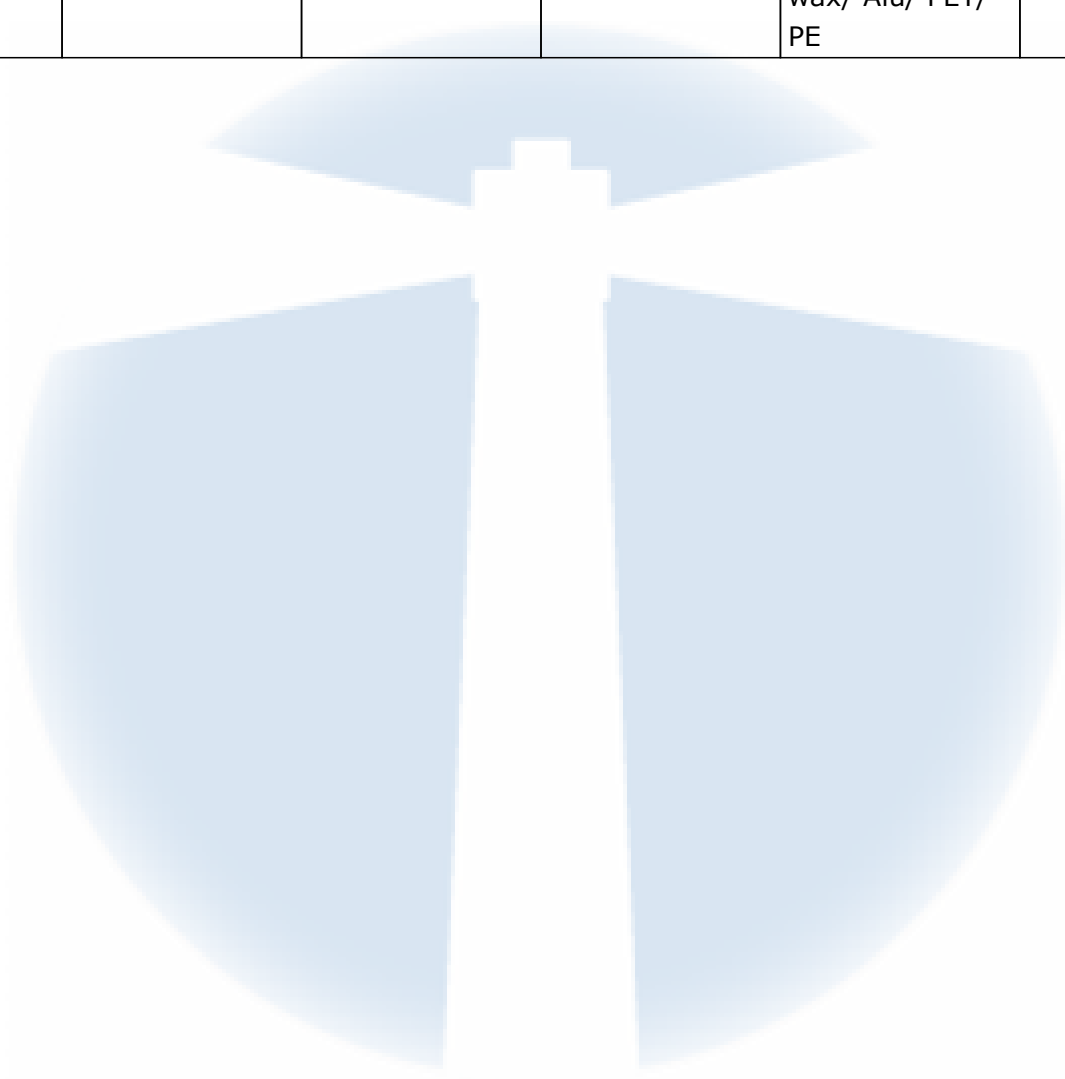


FIRST EVALUATION DATE: **26.04.2023** VALID UNTIL: **30.04.2028**



Rune Madsen Fink
Control Officer
BREVIK, NORWAY, 13.06.2023
NET Emballasje- og Produkttesting AS
Certification

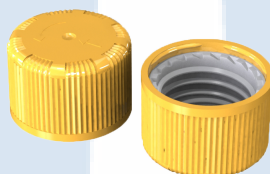
Tested package	Name	Part/drawing #	Volume	Material	Comments
Container	Twinneck	Twinneck 250 ml	250 ml	HDPE	Blow moulded
CR cap	22BA	22IO/7220004	-	HDPE	Outer cap
		22YD/7220002	-	HDPE	Inner cap
		OM028	-	Chromboard/ wax/ Alu/ PET/ PE	wad



**CERTIFICATE NO.: NET28CR22B**
CHILD-RESISTANT PACKAGING

HOLDER OF CERTIFICATE:
Modulpac AB, Sweden

MANUFACTURER: Modulpac AB, Västergatan 16, SE-341 50 Lagan, Sweden
CHILD RESISTANT CLOSURE: 22mm B serie
ON VERIFIED CONTAINER: 50 - 500 ml

**TEST STANDARD:**

An evaluation of the test results has been done in accordance with NET test method ATM003. The test method is accredited in accordance with ISO17025 approved by Norsk Akkreditering. The child-resistant closure is designed for reclosable packages, as child resistant and suitable for adults according to ISO 8317:2015 and all the test results are within the given tolerance range.

**TEST LABORATORY:
ANALYSIS:**

NET Emballasje- og Produkttesting AS, Norway
Containers with a valid appendix combined with 22mm B-serie is confirmed as child resistant and suitable for adults.

VALIDITY:

This certificate is effective together with a valid appendix from NET for the actual container. The certificate is valid until expire date as long as no modifications are made to package, the material, the dimensions or the closure system.

DATE OF CERTIFICATION: **11.11.2022**

CERTIFICATE IS VALID UNTIL: **30.09.2027**

Rune Madsen Fink
Control Officer
BREVIK, NORWAY 11.11.2022
NET Emballasje- og Produkttesting AS
Certification

THE FOLLOWING CLOSURES IS CERTIFIED ACCORDING TO ISO8317:

Drawing no	Material	Oblat/Spout cap	Name
1: 7220002	HDPE	Outercap	22YD
2: 7220003	PPC/POM	Innecap	22IK
3: 7220004	PPC	Innecap	22IO
4: 8220002	ALU	Wad	-
5: 8220002	PET	Wad	-
6: 8220002	PPC	Wad	-

DOCUMENTS BASED UPON FOR APPROVAL:

Report id.	Date	Confirmed by
0028CR0101	06.04.2017	Inger Semb
0028CR0101 RE-test	07.11.2022	Therese Rummelhoff

