



CONTAINER APPENDIX

HOLDER OF DOCUMENT:

Demareis GmbH
APPENDIX NO.:
NET28CR28B-1198/07
TEST LABORATORY:

Net Emballasje- og Produkttesting AS

TEST PERFORMED BY:

Inger Semb

CONTROLLED BY:

Rune Fink

MANUFACTURER CLOSURE:

Modulpac AB, Västergatan 16, SE-341 50 Lagan, Sweden

MANUFACTURER CONTAINER:

Demareis GmbH, Erbacher Str. 43-45, D-64720 Michelstadt, Germany

APPROVAL:

The Child-resistant closure is designed for reclosable packages, as child resistant and suitable for adults.



This appendix is only valid with a valid version of the certificate

TEST STANDARD:

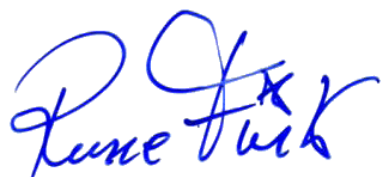
All tests are performed in accordance with NET accredited test method ATM003. The test method is accredited in accordance with NS-EN ISO/IEC 17025:2017 approved by Norsk Akkreditering and according to NS-EN ISO 8317:2015.



FIRST EVALUATION DATE:

22.12.2017

VALID UNTIL:

31.12.2021


Rune Madsen Fink
Control Officer

BREVIK, NORWAY, 22.12.2016

NET Emballasje- og Produkttesting AS
Certification

Tested package	Name	Part/drawing #	Volume	Material	Comments
CR closure cap	28BPP	1, 2 and 15	-	HDPE/ POM/ PET	Injection moulding
Container	Shaped bottle "Yachticon"	10230-0500-28- N	500 ml	PET	Strech Blow moulding

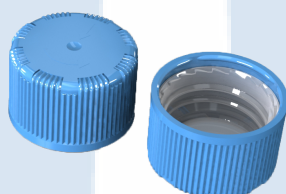




CERTIFICATE NO.: NET28CR28B
CHILD-RESISTANT PACKAGING

HOLDER OF CERTIFICATE:
Modulpac AB, Sweden

MANUFACTURER: Modulpac AB, Västergatan 16, SE-341 50 Lagan, Sweden
CHILD RESISTANT CLOSURE: 28mm B-Series
ON VERIFIED CONTAINER: 250 - 2500 ml



TEST STANDARD:

An evaluation of the test results has been done in accordance with NET test method ATM003. The test method is accredited in accordance with ISO17025 approved by Norsk Akkreditering. The child-resistant closure is designed for reclosable packages, as child resistant and suitable for adults according to ISO 8317:2015 and all the test results are within the given tolerance range.

TEST LABORATORY:
ANALYSIS:

NET Emballasje- og Produkttesting AS, Norway
Containers with a valid appendix combined with 28mm B-serie is confirmed as child resistant and suitable for adults .

VALIDITY:

This certificate is effective together with a valid appendix from NET for the actual container. The certificate is valid until expire date as long as no modifications are made to package, the material, the dimensions or the closure system.

DATE OF CERTIFICATION: **02.09.2022**

CERTIFICATE IS VALID UNTIL:

30.09.2027



Rune Madsen Fink
Control Officer
BREVIK, NORWAY 02.09.2022
NET Emballasje- og Produkttesting AS
Certification

THE FOLLOWING CLOSURES IS CERTIFIED ACCORDING TO ISO8317:

#: Drawing no	Material	Oblat/Spout cap	Name
1: 7280014	HDPE	Outercap	28YD
2: 7280002	PPC / POM	Innercap	28IO
3: 7280004	PPC / POM	Innercap	28IK
4: 7280001	PPC / POM	Innercap	28IT
5: 7280005	PPC	Innercap	28IK PCO
6: 7280006	PPC	Innercap	28IK PETS
7: 7280010	LLD	Innercap	28SI
8: 7280013	LLD	Innercap	28SIS
9: 7280023	PPC	Innercap	28IT PCO
10: 7280029	PPC	Innercap	28IO PCO
11: 8280016	LLD	Spray insert	Spout Cap 22.2
12: 8280009	LLD	Spray insert	Spout Cap 22.5
13: 8280012	LLD	Spray insert	Spout Cap PETS
14: 8280013	PPC	-	Unmounted
15: 8280013	PET	Oblat	PET-oblat
16: 8280013	PP	Oblat	P-oblat
17: 8280013	PP	Oblat	Vent-oblat
18: 8280013	Alu	Oblat	Alu. oblat to PP-bottle
19: 8280014	LLD		PCO-threads
20: 8280015	LLD		PETS-con

DOCUMENTS BASED UPON FOR APPROVAL:

Report id.	Date	Confirmed by
0028CR0103	03.05.2017	Inger Semb
0028CR0103 RE-test	25.08.2022	Therese Rummelhoff