



## CONTAINER APPENDIX

HOLDER OF DOCUMENT:  
**NOPA NORDIC A/S**

**APPENDIX NO.:** 28CR28BPP-1235/02  
**TEST LABORATORY:** NET Emballasje- og Produkttesting AS  
**TEST PERFORMED BY:** Therese Rummelhoff  
**CONTROLLED BY:** Rune Fink  
**MANUFACTURER CLOSURE:** Modulpac AB, Västergatan 16, SE-341 50 Lagan, Sweden  
**MANUFACTURER CONTAINER:** AB Kulleborn & Stenström, Hjärtared 117, 311 62 Ullared, Sweden  
**APPROVAL:** The child-resistant closure is designed for reclosable packages, ensuring safety for children while remaining easy for adults to use

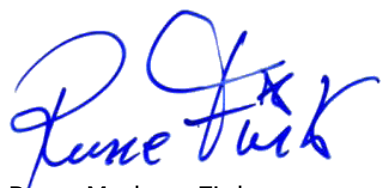


**This appendix is only valid with a valid version of the certificate**

**TEST STANDARD:** All tests are performed in accordance with NET accredited test method ATM003. The test method is accredited in accordance with NS-EN ISO/IEC 17025:2017 approved by Norsk Akkreditering and according to NS-EN ISO 8317:2015.



FIRST EVALUATION DATE: **06.06.2024** VALID UNTIL: **31.08.2029**



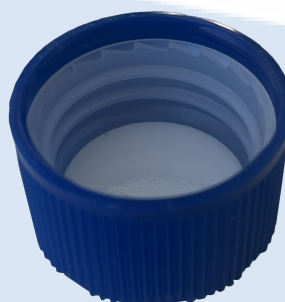
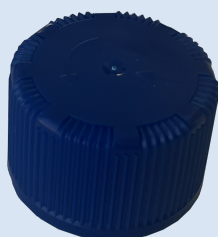
Rune Madsen Fink  
Control Officer  
BREVIK, NORWAY, 07.08.2024  
NET Emballasje- og Produkttesting AS  
Certification

Tested package	Name	Part/drawing #	Volume	Material	Comments
Container with handle	EF1108	Klor 1500ml_neck 28_2D	1500 ml	HDPE	Blow molded
CR Closure	28BPP	8280013	-	HDPE/ HDPE	Injection molded
		Wad OM015	-	PET/ ALKOzell LDPE-foam/ PET/	Cast film

**CERTIFICATE NO.: 28CR28BPP**  
**CHILD-RESISTANT PACKAGING**

HOLDER OF CERTIFICATE:  
**Modulpac AB, Norway**

**MANUFACTURER:** Modulpac AB, Västergatan 16, SE-341 50 Lagan, Sweden  
**CHILD RESISTANT CLOSURE:** 28CR28BPP  
**ON VERIFIED CONTAINER:** 500 - 1500 ml

**TEST STANDARD:**

All tests are performed in accordance with NET accredited test method ATM003. The test method is accredited in accordance with NS-EN ISO/IEC 17025:2017 approved by Norsk Akkreditering and according to NS-EN ISO 8317:2015.

**TEST LABORATORY:**  
**ANALYSIS:**

NET Emballasje- og Produkttesting AS, Norway  
Containers with a valid appendix, combined with 28BPP, are confirmed as child-resistant and suitable for adults.

**VALIDITY:**

This certificate is valid in conjunction with a valid appendix from NET for the specific container. The certificate remains valid until the expiration date, provided no modifications are made to the packaging, material, dimensions, or closure system.

DATE OF CERTIFICATION: **03.10.2024**

CERTIFICATE IS VALID UNTIL:

**31.10.2029**

Rune Madsen Fink  
Control Officer  
BREVIK, NORWAY 03.10.2024  
NET Emballasje- og Produkttesting AS  
Certification

## DOCUMENTS BASED UPON FOR APPROVAL:

Report id.	Date	Issued by	Test performed by
NET28CR28BPP	03.10.2024	NET	Therese Rummelhof

