



CONTAINER APPENDIX

HOLDER OF DOCUMENT:
NOPA NORDIC A/S

APPENDIX NO.: 28CR28BPP-1235/03
TEST LABORATORY: NET Emballasje- og Produkttesting AS
TEST PERFORMED BY: Therese Rummelhoff
CONTROLLED BY: Rune Fink
MANUFACTURER CLOSURE: Modulpac AB, Västergatan 16, SE-341 50 Lagan, Sweden
MANUFACTURER CONTAINER: Robinson Packaging Denmark A/S, Erhvervsvej 2, 6650 Brørup, Denmark
APPROVAL: The child-resistant closure is designed for reclosable packages, ensuring safety for children while remaining easy for adults to use

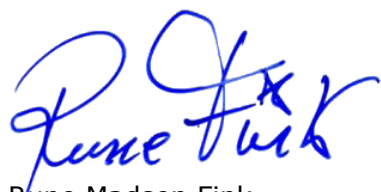


This appendix is only valid with a valid version of the certificate

TEST STANDARD: All tests are performed in accordance with NET accredited test method ATM003. The test method is accredited in accordance with NS-EN ISO/IEC 17025:2017 approved by Norsk Akkreditering and according to NS-EN ISO 8317:2015.

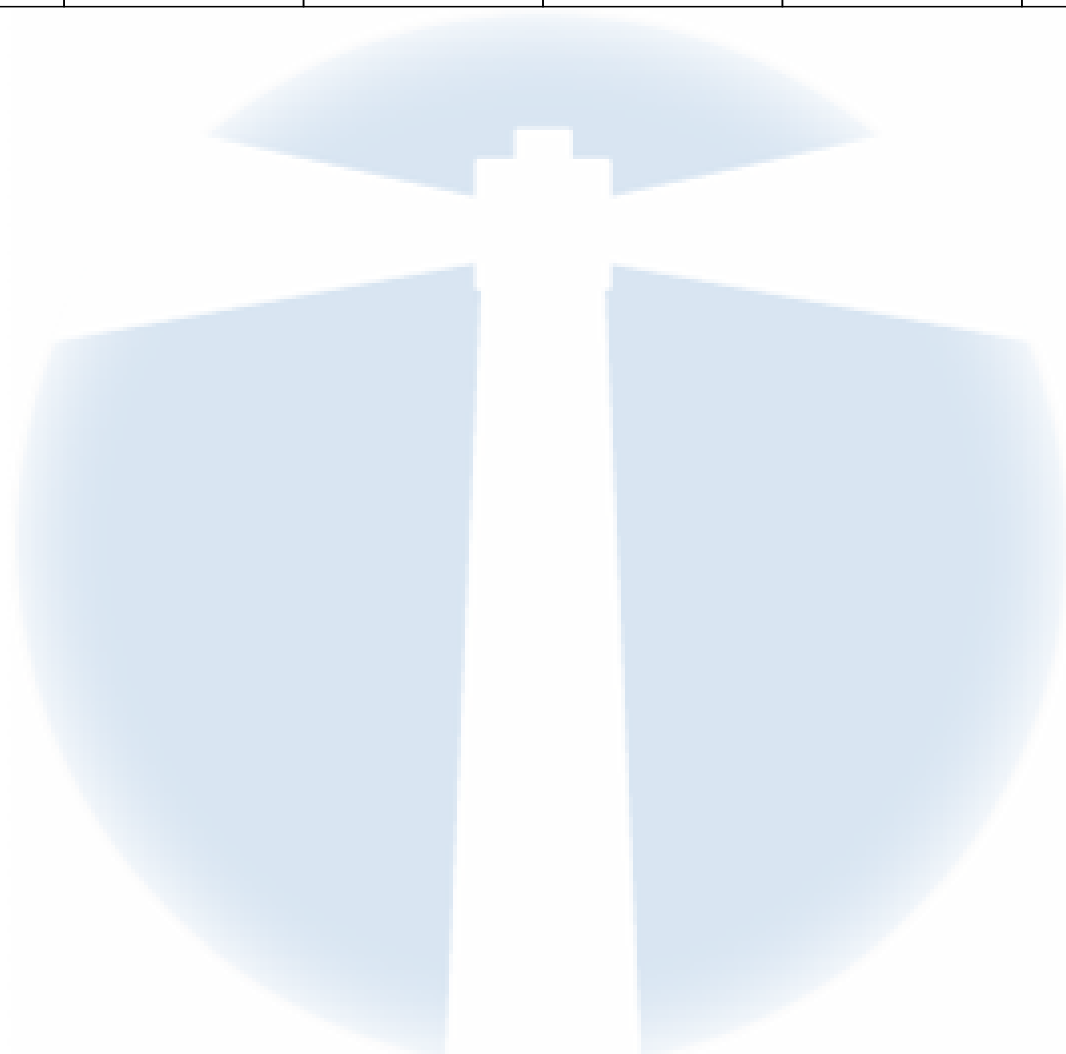


FIRST EVALUATION DATE: **06.06.2024** VALID UNTIL: **31.08.2029**



Rune Madsen Fink
Control Officer
BREVIK, NORWAY, 07.08.2024
NET Emballasje- og Produkttesting AS
Certification

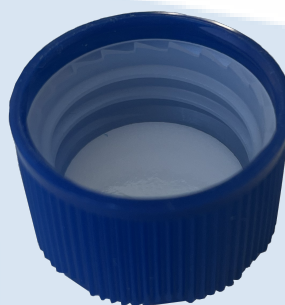
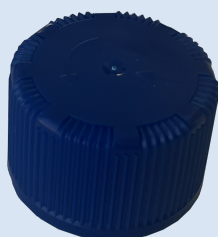
Tested package	Name	Part/drawing #	Volume	Material	Comments
Container	Round Bottle Rev B	197-B497-200	1000 ml	HDPE	Blow molded
CR Closure	28BPP	8280013	-	HDPE/ HDPE	Injection molded
		Wad OM015		PET/ALKOzell LDPE-foam/PET	Cast film



**CERTIFICATE NO.: 28CR28BPP**
CHILD-RESISTANT PACKAGING

HOLDER OF CERTIFICATE:
Modulpac AB, Norway

MANUFACTURER: Modulpac AB, Västergatan 16, SE-341 50 Lagan, Sweden
CHILD RESISTANT CLOSURE: 28CR28BPP
ON VERIFIED CONTAINER: 500 - 1500 ml

**TEST STANDARD:**

All tests are performed in accordance with NET accredited test method ATM003. The test method is accredited in accordance with NS-EN ISO/IEC 17025:2017 approved by Norsk Akkreditering and according to NS-EN ISO 8317:2015.

TEST LABORATORY:
ANALYSIS:

NET Emballasje- og Produkttesting AS, Norway
Containers with a valid appendix, combined with 28BPP, are confirmed as child-resistant and suitable for adults.

VALIDITY:

This certificate is valid in conjunction with a valid appendix from NET for the specific container. The certificate remains valid until the expiration date, provided no modifications are made to the packaging, material, dimensions, or closure system.

DATE OF CERTIFICATION: **03.10.2024**

CERTIFICATE IS VALID UNTIL:

31.10.2029

Rune Madsen Fink
Control Officer
BREVIK, NORWAY 03.10.2024
NET Emballasje- og Produkttesting AS
Certification

DOCUMENTS BASED UPON FOR APPROVAL:

Report id.	Date	Issued by	Test performed by
NET28CR28BPP	03.10.2024	NET	Therese Rummelhof

