



CONTAINER APPENDIX

HOLDER OF DOCUMENT:
Emballator Väjö AB

APPENDIX NO.:	NET16CRP32-02/01
TEST LABORATORY:	NET AS
TEST PERFORMED BY:	Therese Rummelhoff
CONTROLLED BY:	Rune Fink
MANUFACTURER CLOSURE:	Emballator Väjö AB
MANUFACTURER CONTAINER:	Berry Kambo A/S
APPROVAL:	The child-resistant packaging is designed to be reclosable, ensuring safety for children while remaining easy for adults to open and use.

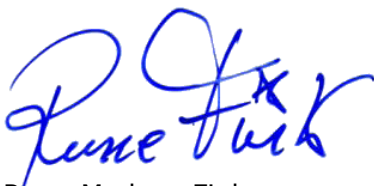


This appendix is only valid with a valid version of the certificate

TEST STANDARD: All tests are performed in accordance with NET accredited test method ATM003. The test method is accredited in accordance with NS-EN ISO/IEC 17025:2017 approved by Norsk Akkreditering and according to NS-EN ISO 8317:2015 and NS-EN ISO 13274:2013.



FIRST EVALUATION DATE: **22.10.2025** VALID UNTIL: **31.10.2030**



Rune Madsen Fink
Control Officer
BREVIK, NORWAY, 24.10.2025
NET Emballasje- og Produkttesting AS
Certification

Tested package	Name	Part/drawing #	Volume	Material	Comments
Bottle	9339	B-30980	1 L	HDPE	Blow molded

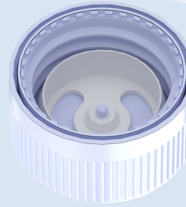
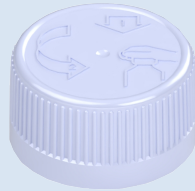




**CERTIFICATE NO.: NET16CRP32-881/919-POUR
CHILD-RESISTANT PACKAGING**

HOLDER OF CERTIFICATE:
Emballator Växjö AB

MANUFACTURER: Emballator Växjö AB, Smedjegatan 8, SE 35246 Växjö, Sweden
CHILD RESISTANT CLOSURE: 16CRP32-881/919-POUR
ON VERIFIED CONTAINER: 500 - 1500 ml



TEST STANDARD:

An evaluation of the test results has been done in accordance with NET test method ATM003. The test method is accredited in accordance with ISO17025 approved by Norsk Akkreditering. The child-resistant closure is designed for reclosable packages, as child resistant and suitable for adults according to ISO 8317:2015 and all the test results are within the given tolerance range.

**TEST LABORATORY:
ANALYSIS:**

NET AS, Norway

VALIDITY:

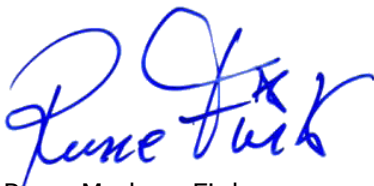
Containers with a valid appendix, combined with P32-881/919-POUR insert, are confirmed as child-resistant and suitable for adults.

This certificate is effective together with a valid appendix from NET for the actual container. The certificate is valid until expire date as long as no modifications are made to package, the material, the dimensions or the closure system.

DATE OF CERTIFICATION: **16.06.2025**

CERTIFICATE IS VALID UNTIL:

30.06.2030



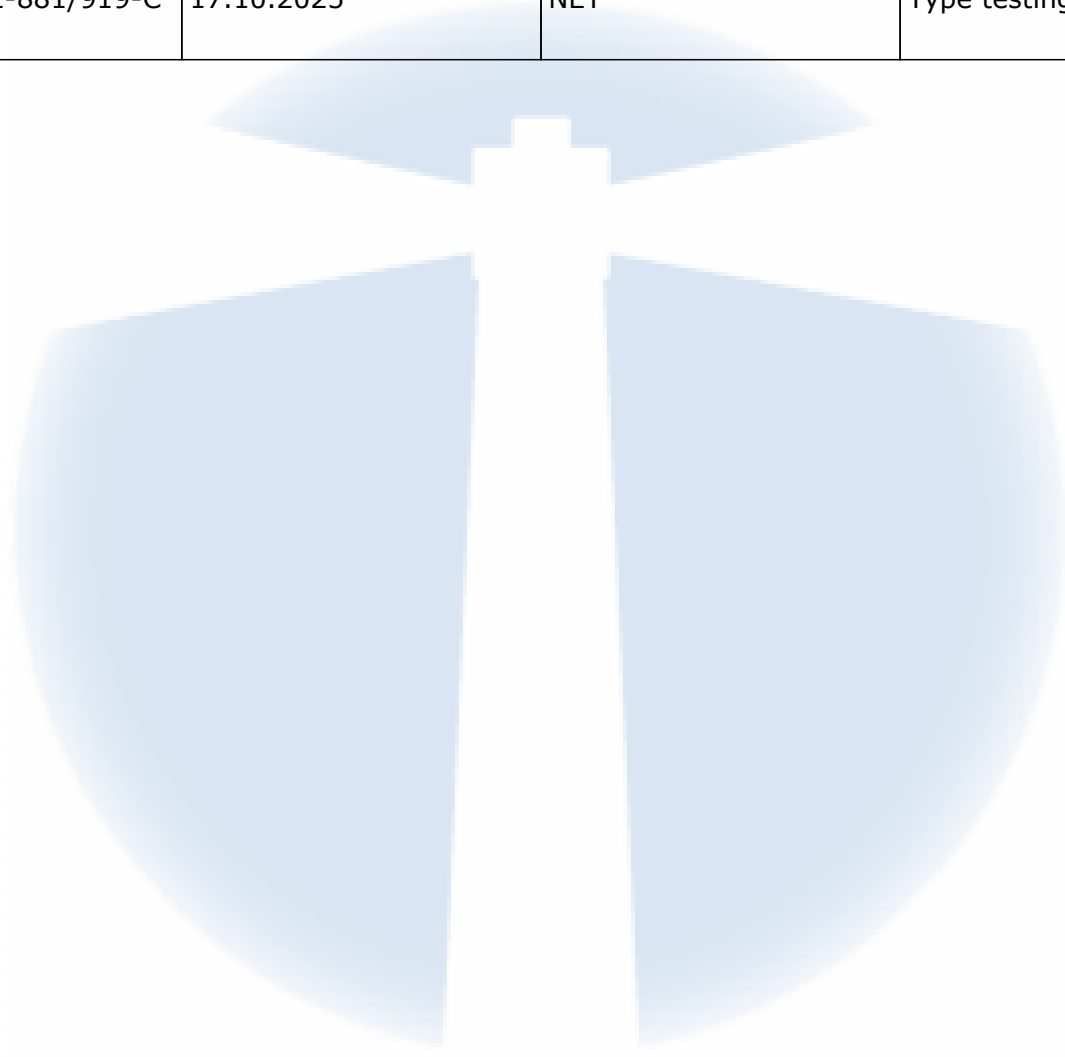
Rune Madsen Fink
Control Officer
BREVIK, NORWAY 16.06.2025
NET Emballasje- og Produkttesting AS
Certification

THE FOLLOWING CLOSURES IS CERTIFIED ACCORDING TO ISO8317:

Name	Drawing	Material inner/outer cap	Insert
P32-881/919-POUR	12463	PPH/PPH	Pour Insert LDPE

DOCUMENTS BASED UPON FOR APPROVAL:

Report id.	Date	Issued by	Scope
06941530614 - 8317	19.08.2014	IVM	Type testing
NET16CRP32-881/919-C one/PPH	17.10.2025	NET	Type testing

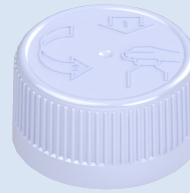
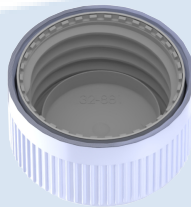




**CERTIFICATE NO.: NET16CRP32-881/919-HDPE
CHILD-RESISTANT PACKAGING**

HOLDER OF CERTIFICATE:
Emballator Växjö AB

MANUFACTURER: Emballator Växjö AB, Smedjegatan 8, SE 35246 Växjö, Sweden
CHILD RESISTANT CLOSURE: NET16CRP32-881/919-HDPE
ON VERIFIED CONTAINER: 500 - 1500 ml



TEST STANDARD:

An evaluation of the test results has been done in accordance with NET test method ATM003. The test method is accredited in accordance with ISO17025 approved by Norsk Akkreditering. The child-resistant closure is designed for reclosable packages, as child resistant and suitable for adults according to ISO 8317:2015 and all the test results are within the given tolerance range.

TEST LABORATORY:

NET AS, Norway

ANALYSIS:

Containers with a valid appendix, combined with P32-881/919-POM Cone, are confirmed as child-resistant and suitable for adults.

VALIDITY:

This certificate is effective together with a valid appendix from NET for the actual container. The certificate is valid until expire date as long as no modifications are made to package, the material, the dimensions or the closure system.

DATE OF CERTIFICATION: **16.06.2025**

CERTIFICATE IS VALID UNTIL:

30.06.2030



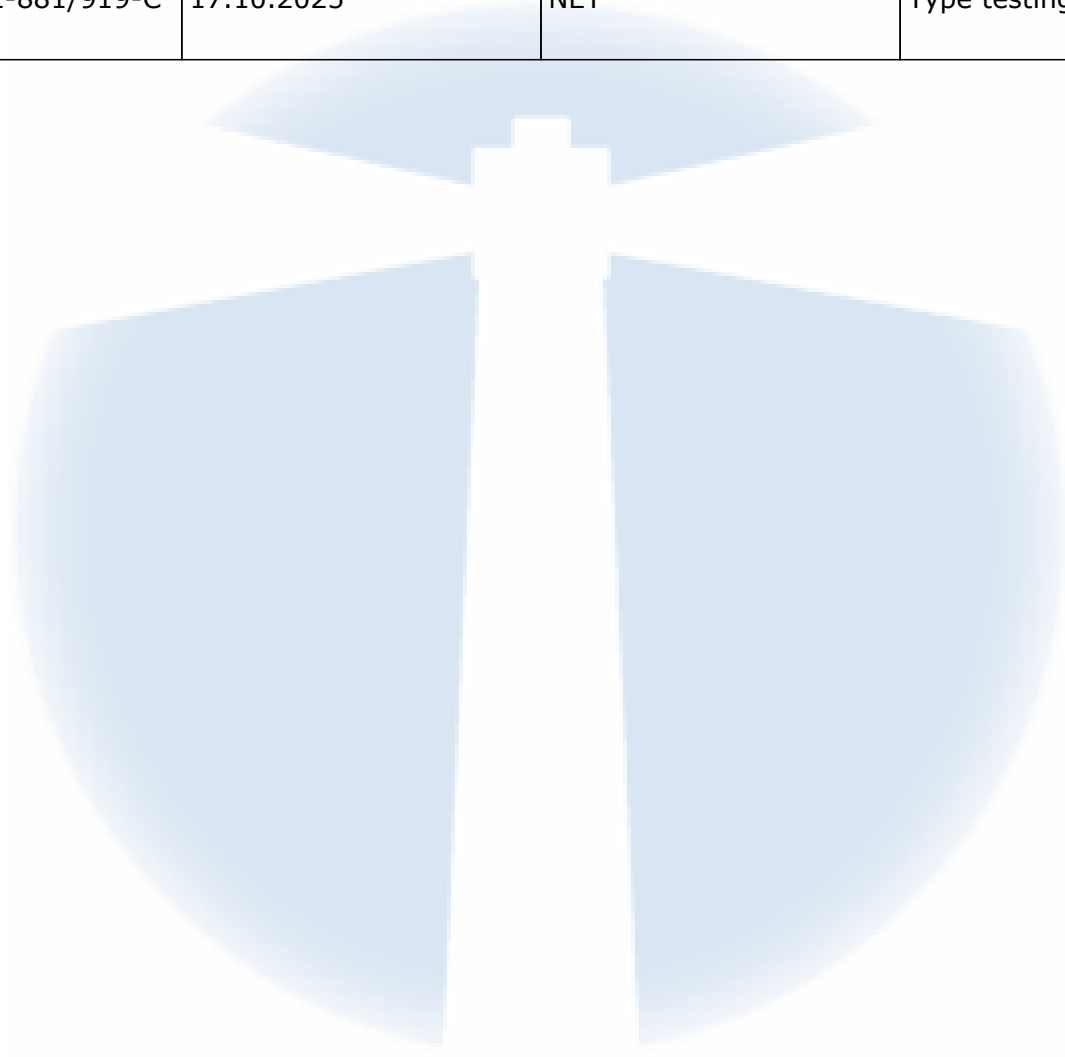
Rune Madsen Fink
Control Officer
BREVIK, NORWAY 16.06.2025
NET AS

THE FOLLOWING CLOSURES IS CERTIFIED ACCORDING TO ISO8317:

Name	Drawing	Materials inner/outer cap	Gasket
P32-881/919-HDPE	12524	HDPE/PPH	Cone

DOCUMENTS BASED UPON FOR APPROVAL:

Report id.	Date	Issued by	Scope
06941530614-8317	19.08.2014	IVM	Type testing
NET16CRP32-881/919-C one/PPH	17.10.2025	NET	Type testing

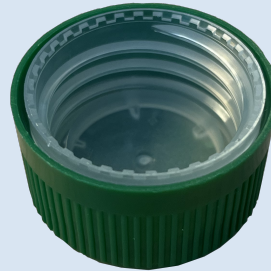




**CERTIFICATE NO.: NET16CRP32-881/919-PPH
CHILD-RESISTANT PACKAGING**

HOLDER OF CERTIFICATE:
Emballator Växjö AB

MANUFACTURER: Emballator Växjö AB, Smedjegatan 8, SE 35246 Växjö, Sweden
CHILD RESISTANT CLOSURE: NET16CRP32-881/919-PPH
ON VERIFIED CONTAINER: 500 - 1500 ml



TEST STANDARD:

An evaluation of the test results has been done in accordance with NET test method ATM003. The test method is accredited in accordance with ISO17025 approved by Norsk Akkreditering. The child-resistant closure is designed for reclosable packages, as child resistant and suitable for adults according to ISO 8317:2015 and all the test results are within the given tolerance range.

**TEST LABORATORY:
ANALYSIS:**

NET AS, Norway
Containers with a valid appendix, combined with P32-881/919-PPH Cone , are confirmed as child-resistant and suitable for adults.

VALIDITY:

This certificate is effective together with a valid appendix from NET for the actual container. The certificate is valid until expire date as long as no modifications are made to package, the material, the dimensions or the closure system.

DATE OF CERTIFICATION: **17.10.2025**

CERTIFICATE IS VALID UNTIL:

31.10.2030

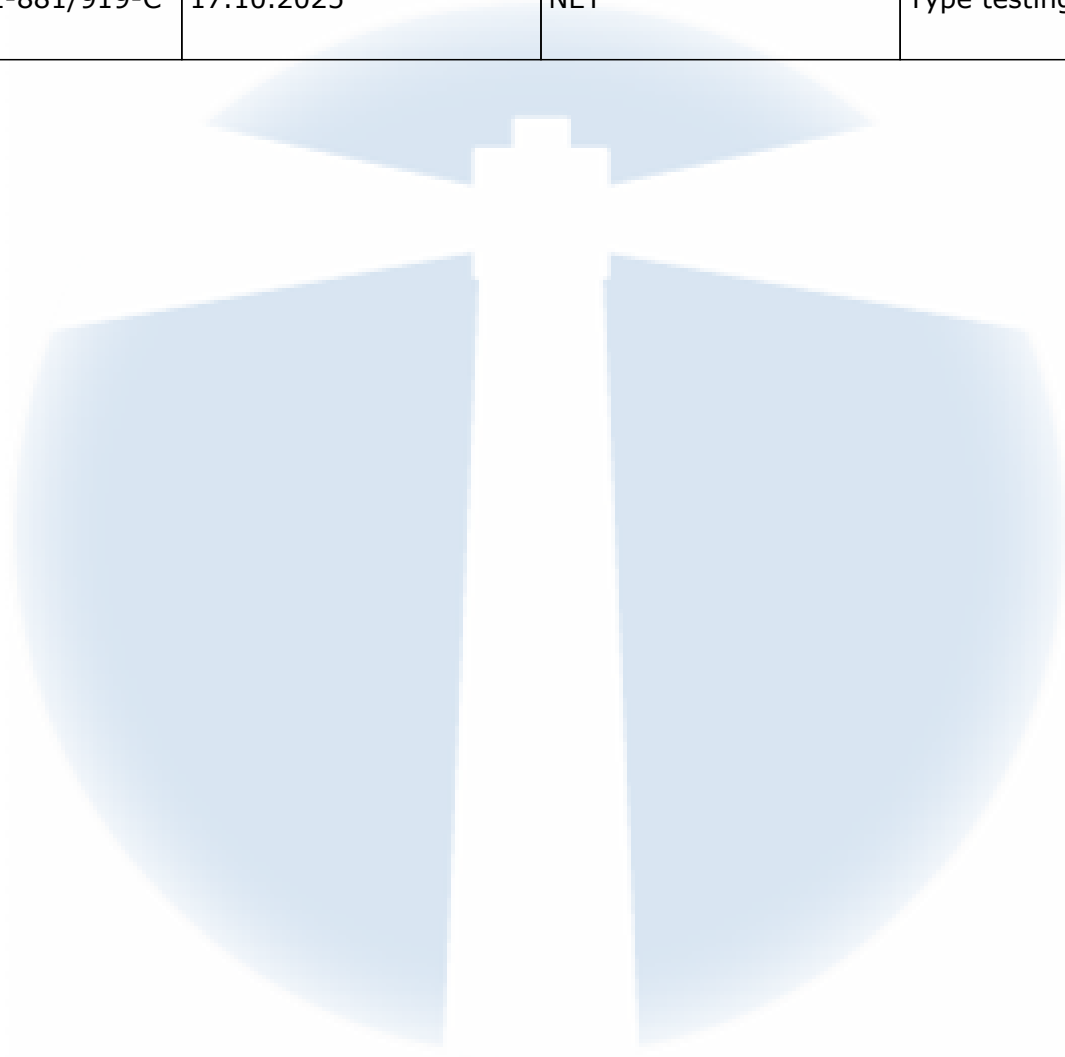
Rune Madsen Fink
Control Officer
BREVIK, NORWAY 17.10.2025
NET Emballasje- og Produkttesting AS
Certification

THE FOLLOWING CLOSURES IS CERTIFIED ACCORDING TO ISO8317:

Name	Drawing	Material inner/outer cap	Gasket
P32-881/919-PPH	12454	PPH/PPH	Cone

DOCUMENTS BASED UPON FOR APPROVAL:

Report id.	Date	Issued by	Scope
06941530614-8317	19.08.2014	IVM	Type testing
NET16CRP32-881/919-C one/PPH	17.10.2025	NET	Type testing

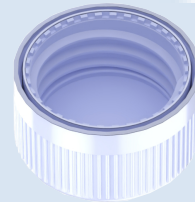
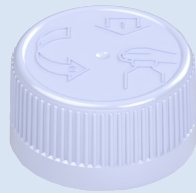




**CERTIFICATE NO.: NET16CRP32-892/919-PET
CHILD-RESISTANT PACKAGING**

HOLDER OF CERTIFICATE:
Emballator Växjö AB

MANUFACTURER: Emballator Växjö AB, Smedjegatan 8, SE 35246 Växjö, Sweden
CHILD RESISTANT CLOSURE: NET16CRP32-892/919-PET
ON VERIFIED CONTAINER: 500 - 1500 ml



TEST STANDARD:

An evaluation of the test results has been done in accordance with NET test method ATM003. The test method is accredited in accordance with ISO17025 approved by Norsk Akkreditering. The child-resistant closure is designed for reclosable packages, as child resistant and suitable for adults according to ISO 8317:2015 and all the test results are within the given tolerance range.

**TEST LABORATORY:
ANALYSIS:**

NET AS, Norway
Containers with a valid appendix, combined with P32-892/919-PET, are confirmed as child-resistant and suitable for adults.

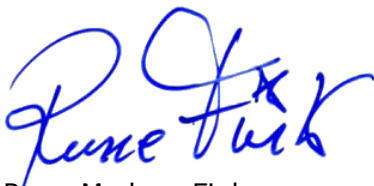
VALIDITY:

This certificate is effective together with a valid appendix from NET for the actual container. The certificate is valid until expire date as long as no modifications are made to package, the material, the dimensions or the closure system.

DATE OF CERTIFICATION: **16.06.2025**

CERTIFICATE IS VALID UNTIL:

30.06.2030



Rune Madsen Fink
Control Officer
BREVIK, NORWAY 16.06.2025
NET Emballasje- og Produkttesting AS
Certification

THE FOLLOWING CLOSURES IS CERTIFIED ACCORDING TO ISO8317:

Name	Drawing	Materials inner/outer cap	Gasket
P32-892/919-PET	12458	PPH/PPH	EPE / PET

DOCUMENTS BASED UPON FOR APPROVAL:

Report id.	Date	Issued by	Scope
06941530614-8317	19.08.2014	IVM	Type testing
NET16CRP32-881/919-C one/PPH	17.10.2025	NET	Type testing

