



CONTAINER APPENDIX

HOLDER OF DOCUMENT:
Modulpac AB

APPENDIX NO.: NET28CR28-02/01
TEST LABORATORY: NET AS
TEST PERFORMED BY: Therese Rummelhoff
CONTROLLED BY: Rune Fink
MANUFACTURER CLOSURE: Modulpac AB, Västergatan 16, SE-341 50 Lagan, Sweden
MANUFACTURER CONTAINER: Berry Norway Containers Brevikveien 535, N-1506 Moss, Norway
APPROVAL: The child-resistant packaging is designed to be reclosable, ensuring safety for children while remaining easy for adults to open and use.



This appendix is only valid with a valid version of the certificate


TEST STANDARD: All tests are performed in accordance with NET accredited test method ATM003. The test method is accredited in accordance with NS-EN ISO/IEC 17025:2017 approved by Norsk Akkreditering and according to NS-EN ISO 8317:2015 and NS-EN ISO 13274:2013.



FIRST EVALUATION DATE: **13.02.2026**

VALID UNTIL:

28.02.2031



Rune Madsen Fink
Control Officer
BREVIK, NORWAY, 13.02.2026
NET AS

Tested package	Name	Part/drawing #	Volume	Material	Comments
Container	9338	B-30566A	1 L	HDPE	Blow molded

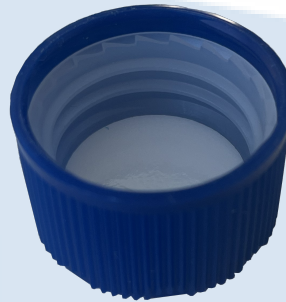
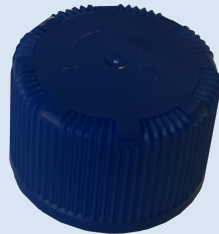




CERTIFICATE NO.: 28CR28BPP
CHILD-RESISTANT PACKAGING

HOLDER OF CERTIFICATE:
Modulpac AB, Norway

MANUFACTURER: Modulpac AB, Västergatan 16, SE-341 50 Lagan, Sweden
CHILD RESISTANT CLOSURE: 28CR28BPP
ON VERIFIED CONTAINER: 500 - 1500 ml



TEST STANDARD:

All tests are performed in accordance with NET accredited test method ATM003. The test method is accredited in accordance with NS-EN ISO/IEC 17025:2017 approved by Norsk Akkreditering and according to NS-EN ISO 8317:2015.

TEST LABORATORY:
ANALYSIS:

NET Emballasje- og Produkttesting AS, Norway
Containers with a valid appendix, combined with 28BPP, are confirmed as child-resistant and suitable for adults.

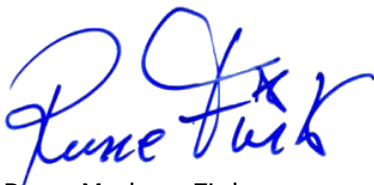
VALIDITY:

This certificate is valid in conjunction with a valid appendix from NET for the specific container. The certificate remains valid until the expiration date, provided no modifications are made to the packaging, material, dimensions, or closure system.

DATE OF CERTIFICATION: **03.10.2024**

CERTIFICATE IS VALID UNTIL:

31.10.2029



Rune Madsen Fink
Control Officer
BREVIK, NORWAY 03.10.2024
NET Emballasje- og Produkttesting AS
Certification

DOCUMENTS BASED UPON FOR APPROVAL:

Report id.	Date	Issued by	Test performed by
NET28CR28BPP	03.10.2024	NET	Therese Rummelhof





CERTIFICATE NO.: NET28CR28B
CHILD-RESISTANT PACKAGING

HOLDER OF CERTIFICATE:
Modulpac AB

MANUFACTURER: Modulpac AB, Västergatan 16, SE-341 50 Lagan, Sweden

CHILD RESISTANT CLOSURE: NET28CR28B

ON VERIFIED CONTAINER: Berry Norway Containers Brevikveien 535 N-1506 Moss Norway



TEST STANDARD:

An evaluation of the test results has been done in accordance with NET test method ATM003. The test method is accredited in accordance with ISO17025 approved by Norsk Akkreditering. The child-resistant closure is designed for reclosable packages, as child resistant and suitable for adults according to ISO 8317:2015 and all the test results are within the given tolerance range.

TEST LABORATORY:

NET AS, Norway

ANALYSIS:

Containers with a valid appendix, combined with 28B, are confirmed as child-resistant and suitable for adults.

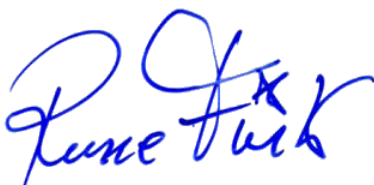
VALIDITY:

This certificate is effective together with a valid appendix from NET for the actual container. The certificate is valid until expire date as long as no modifications are made to package, the material, the dimensions or the closure system.

DATE OF CERTIFICATION: **13.02.2026**

CERTIFICATE IS VALID UNTIL:

28.02.2031



Rune Madsen Fink
Control Officer
BREVIK, NORWAY 13.02.2026
NET AS

THE FOLLOWING CLOSURES IS CERTIFIED ACCORDING TO ISO8317:

Name	Drawing	Material inner/outer	Gasket
28B	8280006	HDPE/HDPE	Cone

DOCUMENTS BASED UPON FOR APPROVAL:

Report id.	Date	Issued by	Scope
NET28CR28B-02/03	30.01.2026	NET	Type testing





CERTIFICATE NO.: NET28CR28BA
CHILD-RESISTANT PACKAGING

HOLDER OF CERTIFICATE:
Modulpac AB

MANUFACTURER: Modulpac AB, Västergatan 16, SE-341 50 Lagan, Sweden
CHILD RESISTANT CLOSURE: NET28CR28BA
ON VERIFIED CONTAINER: 250 - 2500 ml



TEST STANDARD:

An evaluation of the test results has been done in accordance with NET test method ATM003. The test method is accredited in accordance with ISO17025 approved by Norsk Akkreditering. The child-resistant closure is designed for reclosable packages, as child resistant and suitable for adults according to ISO 8317:2015 and all the test results are within the given tolerance range.

TEST LABORATORY:
ANALYSIS:

NET AS, Norway

Containers with a valid appendix, combined with 28 BA, are confirmed as child-resistant and suitable for adults.

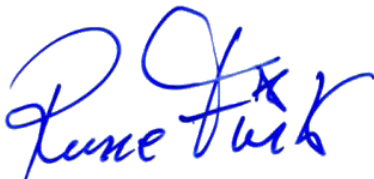
VALIDITY:

This certificate is effective together with a valid appendix from NET for the actual container. The certificate is valid until expire date as long as no modifications are made to package, the material, the dimensions or the closure system.

DATE OF CERTIFICATION: **13.02.2026**

CERTIFICATE IS VALID UNTIL:

28.02.2031



Rune Madsen Fink
Control Officer
BREVIK, NORWAY 13.02.2026
NET AS

THE FOLLOWING CLOSURES IS CERTIFIED ACCORDING TO ISO8317:

Name	Drawing	Material inner/outer	Wad
28 BA	8280013	HDPE / HDPE	OT005

DOCUMENTS BASED UPON FOR APPROVAL:

Report id.	Date	Issued by	Scope
NET28CR28BA-02/02	30.01.26	NET	Type testing





**CERTIFICATE NO.: NET28CR28BATT
CHILD-RESISTANT PACKAGING**

HOLDER OF CERTIFICATE:
Modulpac AB

MANUFACTURER: Modulpac AB, Västergatan 16, SE-341 50 Lagan, Sweden
CHILD RESISTANT CLOSURE: 28CR28BATT
ON VERIFIED CONTAINER: 250 - 2500 ml



TEST STANDARD:

An evaluation of the test results has been done in accordance with NET test method ATM003. The test method is accredited in accordance with ISO17025 approved by Norsk Akkreditering. The child-resistant closure is designed for reclosable packages, as child resistant and suitable for adults according to ISO 8317:2015 and all the test results are within the given tolerance range.

**TEST LABORATORY:
ANALYSIS:**

NET AS, Norway

Containers with a valid appendix, combined with 28BATT, are confirmed as child-resistant and suitable for adults.

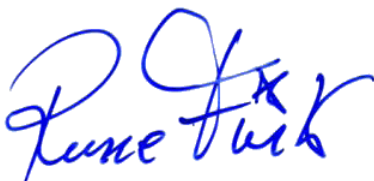
VALIDITY:

This certificate is effective together with a valid appendix from NET for the actual container. The certificate is valid until expire date as long as no modifications are made to package, the material, the dimensions or the closure system.

DATE OF CERTIFICATION: **13.02.2026**

CERTIFICATE IS VALID UNTIL:

28.02.2031



Rune Madsen Fink
Control Officer
BREVIK, NORWAY 13.02.2026
NET AS

THE FOLLOWING CLOSURES IS CERTIFIED ACCORDING TO ISO8317:

Name:	Drawing	Material inner/ outer	Wad
28 BATT	8280013	HDPE/HDPE	OS004

DOCUMENTS BASED UPON FOR APPROVAL:

Report id.	Date	Issued by	Scope
0028CR0103	03.05.2017	NET	Type approval
0028CR0103 RE-test	25.08.2022	NET	Type approval

