



CONTAINER APPENDIX

HOLDER OF DOCUMENT:
Emballator Växjö AB

APPENDIX NO.: NET16CRP28-01/05
TEST LABORATORY: NET AS
TEST PERFORMED BY: Tonje M Nikolaisen
CONTROLLED BY: Rune Fink
MANUFACTURER CLOSURE: Emballator Växjö AB, Smedjegatan 8, SE 35246 Växjö, Sweden
MANUFACTURER CONTAINER: Emballator Mellerud AB, Industrigatan 6, 464 33 Mellerud, Sweden
APPROVAL: The child-resistant packaging is designed to be reclosable, ensuring safety for children while remaining easy for adults to open and use.



This appendix is only valid with a valid version of the certificate


TEST STANDARD: All tests are performed in accordance with NET accredited test method ATM003. The test method is accredited in accordance with NS-EN ISO/IEC 17025:2017 approved by Norsk Akkreditering and according to NS-EN ISO 8317:2015 and NS-EN ISO 13274:2013.



FIRST EVALUATION DATE: **03.06.2026**

VALID UNTIL:

30.06.2031



Rune Madsen Fink
Control Officer
BREVIK, NORWAY, 03.06.2026
NET AS

Tested package	Name	Part/drawing #	Volume	Material	Comments
Bottle	U 1L/28 50g of, taktilmärke	U0100-280	1000ml	HDPE	Blow molded

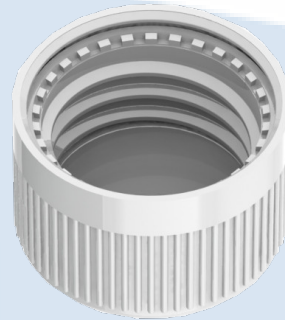




**CERTIFICATE NO.: NET16CRP28-118/127-PET
CHILD-RESISTANT PACKAGING**

HOLDER OF CERTIFICATE:
Emballator Växjö AB, Sweden

MANUFACTURER: Emballator Växjö AB, Smedjegatan 8, SE 35246 Växjö, Sweden
CHILD RESISTANT CLOSURE: 16CRP28-118/127-PET
ON VERIFIED CONTAINER: 200 - 1500 ml



TEST STANDARD:

An evaluation of the test results has been done in accordance with NET test method ATM003. The test method is accredited in accordance with ISO17025 approved by Norsk Akkreditering. The child-resistant closure is designed for reclosable packages, as child resistant and suitable for adults according to ISO 8317:2015 and all the test results are within the given tolerance range.

**TEST LABORATORY:
ANALYSIS:**

NET AS, Norway
Containers with a valid appendix, combined with 16CRP28-118/127-PET, are confirmed as child-resistant and suitable for adults.

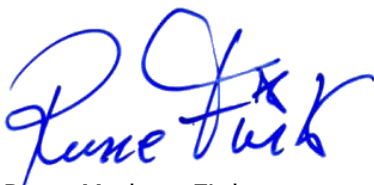
VALIDITY:

This certificate is effective together with a valid appendix from NET for the actual container. The certificate is valid until expire date as long as no modifications are made to package, the material, the dimensions or the closure system.

DATE OF CERTIFICATION: **30.05.2025**

CERTIFICATE IS VALID UNTIL:

31.05.2030



Rune Madsen Fink
Control Officer
BREVIK, NORWAY 30.05.2025
NET Emballasje- og Produkttesting AS
Certification

THE FOLLOWING CLOSURES IS CERTIFIED ACCORDING TO ISO8317:

Name	Drawing	Material inner/outer cap	Gasket
118/127	12428	PPC / PPH	EPE / PET

DOCUMENTS BASED UPON FOR APPROVAL:

Report id.	Date	Issued by	Conformed by
06601530314-8317	24.04.2014	IVM	Type test
16CRP28	28.05.2025	NET	Type test

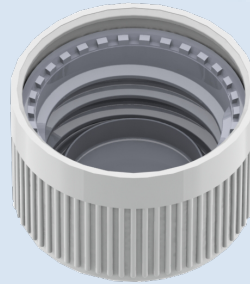




**CERTIFICATE NO.: NET16CRP28-886/127-POM
CHILD-RESISTANT PACKAGING**

HOLDER OF CERTIFICATE:
Emballator Växjö AB, Sweden

MANUFACTURER: Emballator Växjö AB, Smedjegatan 8, SE 35246 Växjö, Sweden
CHILD RESISTANT CLOSURE: 16CRP28-886/127-POM
ON VERIFIED CONTAINER: 200 - 1500 ml



TEST STANDARD:

An evaluation of the test results has been done in accordance with NET test method ATM003. The test method is accredited in accordance with ISO17025 approved by Norsk Akkreditering. The child-resistant closure is designed for reclosable packages, as child resistant and suitable for adults according to ISO 8317:2015 and all the test results are within the given tolerance range.

**TEST LABORATORY:
ANALYSIS:**

NET AS, Norway
Containers with a valid appendix, combined with 16CR28-886/127-POM, are confirmed as child-resistant and suitable for adults.

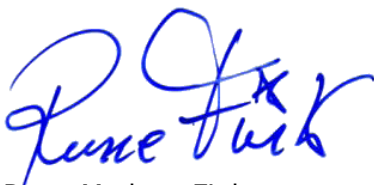
VALIDITY:

This certificate is effective together with a valid appendix from NET for the actual container. The certificate is valid until expire date as long as no modifications are made to package, the material, the dimensions or the closure system.

DATE OF CERTIFICATION: **23.05.2025**

CERTIFICATE IS VALID UNTIL:

31.05.2030



Rune Madsen Fink
Control Officer
BREVIK, NORWAY 23.05.2025
NET Emballasje- og Produkttesting AS
Certification

THE FOLLOWING CLOSURES IS CERTIFIED ACCORDING TO ISO8317:

Name	Drawing	Material Inner / Outer cap	Gasket
P28-886/127-POM	12492	POM / PPH	Cone

DOCUMENTS BASED UPON FOR APPROVAL:

Report id.	Date	Issued by	Scope
06601530314-8317	24.04.14	IVM	Type testing
NET16CR28-886/127-PO M	23.05.25	NET	Type testing

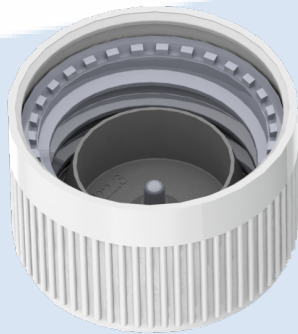




**CERTIFICATE NO.: NET16CRP28-887/127-POM/PLUG
CHILD-RESISTANT PACKAGING**

HOLDER OF CERTIFICATE:
Emballator Växjö AB, Sweden

MANUFACTURER: Emballator Växjö AB, Smedjegatan 8, SE 35246 Växjö, Sweden
CHILD RESISTANT CLOSURE: 16CRP28-887/127-POM/Plug
ON VERIFIED CONTAINER: 200 - 1500 ml



TEST STANDARD:

An evaluation of the test results has been done in accordance with NET test method ATM003. The test method is accredited in accordance with ISO17025 approved by Norsk Akkreditering. The child-resistant closure is designed for reclosable packages, as child resistant and suitable for adults according to ISO 8317:2015 and all the test results are within the given tolerance range.

**TEST LABORATORY:
ANALYSIS:**

NET AS, Norway
Containers with a valid appendix, combined with 16CRP28-887/127-POM, are confirmed as child-resistant and suitable for adults.


VALIDITY:

This certificate is effective together with a valid appendix from NET for the actual container. The certificate is valid until expire date as long as no modifications are made to package, the material, the dimensions or the closure system.

DATE OF CERTIFICATION: **16.06.2025**

CERTIFICATE IS VALID UNTIL:

31.05.2030



Rune Madsen Fink
Control Officer
BREVIK, NORWAY 16.06.2025
NET Emballasje- og Produkttesting AS
Certification

THE FOLLOWING CLOSURES IS CERTIFIED ACCORDING TO ISO8317:

Name	Drawing	Material inner / outer cap	Insert
887/127	12494	POM / PPH	P22.3, LDPE

DOCUMENTS BASED UPON FOR APPROVAL:

Report id.	Date	Issued by	Conformed by
06601530314-8317	24.04.2014	IVM	Type test
16CRP28	28.05.2025	NET	Type test

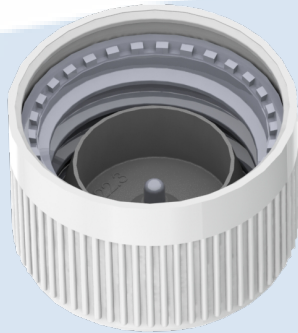




**CERTIFICATE NO.: NET16CRP28-887/127-POM
CHILD-RESISTANT PACKAGING**

HOLDER OF CERTIFICATE:
Emballator Växjö AB, Sweden

MANUFACTURER: Emballator Växjö AB, Smedjegatan 8, SE 35246 Växjö, Sweden
CHILD RESISTANT CLOSURE: 16CRP28-887/127-POM
ON VERIFIED CONTAINER: 200 - 1500 ml



TEST STANDARD:

An evaluation of the test results has been done in accordance with NET test method ATM003. The test method is accredited in accordance with ISO17025 approved by Norsk Akkreditering. The child-resistant closure is designed for reclosable packages, as child resistant and suitable for adults according to ISO 8317:2015 and all the test results are within the given tolerance range.

**TEST LABORATORY:
ANALYSIS:**

NET AS, Norway
Containers with a valid appendix, combined with 16CRP28-887/127-POM, are confirmed as child-resistant and suitable for adults.

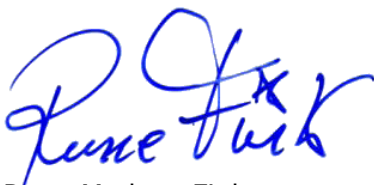
VALIDITY:

This certificate is effective together with a valid appendix from NET for the actual container. The certificate is valid until expire date as long as no modifications are made to package, the material, the dimensions or the closure system.

DATE OF CERTIFICATION: **16.06.2025**

CERTIFICATE IS VALID UNTIL:

31.05.2030



Rune Madsen Fink
Control Officer
BREVIK, NORWAY 16.06.2025
NET Emballasje- og Produkttesting AS
Certification

THE FOLLOWING CLOSURES IS CERTIFIED ACCORDING TO ISO8317:

Name	Drawing	Material inner / outer cap	Insert
887/127	12494	POM / PPH	P22.3, LDPE

DOCUMENTS BASED UPON FOR APPROVAL:

Report id.	Date	Issued by	Conformed by
06601530314-8317	24.04.2014	IVM	Type test
16CRP28	28.05.2025	NET	Type test

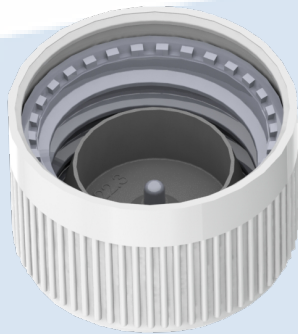




**CERTIFICATE NO.: NET16CRP28-887/127-PPH/PLUG
CHILD-RESISTANT PACKAGING**

HOLDER OF CERTIFICATE:
Emballator Växjö AB, Sweden

MANUFACTURER: Emballator Växjö AB, Smedjegatan 8, SE 35246 Växjö, Sweden
CHILD RESISTANT CLOSURE: 16CRP28-887/127-PPH/Plug
ON VERIFIED CONTAINER: 200 - 1500 ml



TEST STANDARD:

An evaluation of the test results has been done in accordance with NET test method ATM003. The test method is accredited in accordance with ISO17025 approved by Norsk Akkreditering. The child-resistant closure is designed for reclosable packages, as child resistant and suitable for adults according to ISO 8317:2015 and all the test results are within the given tolerance range.

**TEST LABORATORY:
ANALYSIS:**


NET AS, Norway
Containers with a valid appendix, combined with 16CRP28-887/127-PPH, are confirmed as child-resistant and suitable for adults.

VALIDITY:

This certificate is effective together with a valid appendix from NET for the actual container. The certificate is valid until expire date as long as no modifications are made to package, the material, the dimensions or the closure system.

DATE OF CERTIFICATION: **16.06.2025**

CERTIFICATE IS VALID UNTIL: **31.05.2030**



Rune Madsen Fink
Control Officer
BREVIK, NORWAY 16.06.2025
NET Emballasje- og Produkttesting AS
Certification

THE FOLLOWING CLOSURES IS CERTIFIED ACCORDING TO ISO8317:

Name	Drawing	Material inner/ outer cap	Insert
887/127	12432	PPH / PPH	P22.3, LDPE

DOCUMENTS BASED UPON FOR APPROVAL:

Report id.	Date	Issued by	Scope
06601530314-8317	24.04.2014	IVM	Type test
16CRP28	28.05.2025	NET	Type test

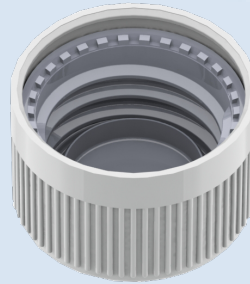




**CERTIFICATE NO.: NET16CRP28-886/127-PPH
CHILD-RESISTANT PACKAGING**

HOLDER OF CERTIFICATE:
Emballator Växjö AB, SWEDEN

MANUFACTURER: Emballator Växjö AB, Smedjegatan 8, 35246, Växjö, Sweden
CHILD RESISTANT CLOSURE: NET16CRP28-886/127-PPH
ON VERIFIED CONTAINER: 200 - 1500 ml



TEST STANDARD:

An evaluation of the test results has been done in accordance with NET test method ATM003. The test method is accredited in accordance with ISO17025 approved by Norsk Akkreditering. The child-resistant closure is designed for reclosable packages, as child resistant and suitable for adults according to ISO 8317:2015 and all the test results are within the given tolerance range.

**TEST LABORATORY:
ANALYSIS:**

NET AS, Norway.

Containers with a valid appendix combined with NET16CRP28-886/127-PPH is confirmed as child resistant and suitable for adults.

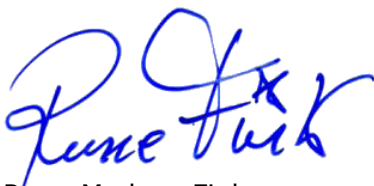
VALIDITY:

This certificate is effective together with a valid appendix from NET for the actual container. The certificate is valid until expire date as long as no modifications are made to package, the material, the dimensions or the closure system.

DATE OF CERTIFICATION: **26.05.2025**

CERTIFICATE IS VALID UNTIL:

31.05.2030



Rune Madsen Fink
Control Officer
BREVIK, NORWAY 26.05.2025
NET Emballasje- og Produkttesting AS
Certification

THE FOLLOWING CLOSURES IS CERTIFIED ACCORDING TO ISO8317:

Name	Drawing	Material inner / outer cap	Gasket
P28-886/127-PPH	12430	PPH / PPH	Cone

DOCUMENTS BASED UPON FOR APPROVAL:

Report id.	Date	Issued by	Scope
06601530314-8317	24.04.2014	IVM	Type test
16CRP28	24.04.2024	NET	Type test
16CR28-886/127	23.05.2025	NET	Type test

