



## CONTAINER APPENDIX

HOLDER OF DOCUMENT:  
**Emballator Växjö AB**

**APPENDIX NO.:** NET16CRP28-01/09  
**TEST LABORATORY:** NET AS  
**TEST PERFORMED BY:** Tonje M Nikolaisen  
**CONTROLLED BY:** Rune Fink  
**MANUFACTURER CLOSURE:** Emballator Växjö AB, Smedjegatan 8, SE 35246 Växjö, Sweden  
**MANUFACTURER CONTAINER:** Emballator Mellerud AB, Industrigatan 6, 464 33 Mellerud, Sweden  
**APPROVAL:** The child-resistant packaging is designed to be reclosable, ensuring safety for children while remaining easy for adults to open and use.



**This appendix is only valid with a valid version of the certificate**


**TEST STANDARD:** All tests are performed in accordance with NET accredited test method ATM003. The test method is accredited in accordance with NS-EN ISO/IEC 17025:2017 approved by Norsk Akkreditering and according to NS-EN ISO 8317:2015 and NS-EN ISO 13274:2013.



FIRST EVALUATION DATE: **04.06.2026**

VALID UNTIL:

**30.06.2031**



Rune Madsen Fink  
Control Officer  
BREVIK, NORWAY, 04.06.2026  
NET AS

Tested package	Name	Part/drawing #	Volume	Material	Comments
Bottle	U 750ML/28 38g of	U0075-280-981	750ml	HDPE	Blow molded

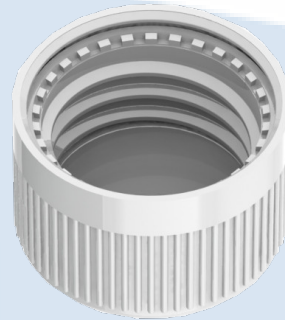




**CERTIFICATE NO.: NET16CRP28-118/127-PET  
CHILD-RESISTANT PACKAGING**

HOLDER OF CERTIFICATE:  
**Emballator Växjö AB, Sweden**

**MANUFACTURER:** Emballator Växjö AB, Smedjegatan 8, SE 35246 Växjö, Sweden  
**CHILD RESISTANT CLOSURE:** 16CRP28-118/127-PET  
**ON VERIFIED CONTAINER:** 200 - 1500 ml



**TEST STANDARD:**

An evaluation of the test results has been done in accordance with NET test method ATM003. The test method is accredited in accordance with ISO17025 approved by Norsk Akkreditering. The child-resistant closure is designed for reclosable packages, as child resistant and suitable for adults according to ISO 8317:2015 and all the test results are within the given tolerance range.

**TEST LABORATORY:  
ANALYSIS:**

NET AS, Norway  
Containers with a valid appendix, combined with 16CRP28-118/127-PET, are confirmed as child-resistant and suitable for adults.

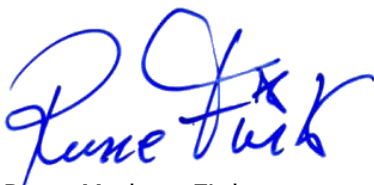
**VALIDITY:**

This certificate is effective together with a valid appendix from NET for the actual container. The certificate is valid until expire date as long as no modifications are made to package, the material, the dimensions or the closure system.

DATE OF CERTIFICATION: **30.05.2025**

CERTIFICATE IS VALID UNTIL:

**31.05.2030**



Rune Madsen Fink  
Control Officer  
BREVIK, NORWAY 30.05.2025  
NET Emballasje- og Produkttesting AS  
Certification

**THE FOLLOWING CLOSURES IS CERTIFIED ACCORDING TO ISO8317:**

Name	Drawing	Material inner/outer cap	Gasket
118/127	12428	PPC / PPH	EPE / PET

**DOCUMENTS BASED UPON FOR APPROVAL:**

Report id.	Date	Issued by	Conformed by
06601530314-8317	24.04.2014	IVM	Type test
16CRP28	28.05.2025	NET	Type test

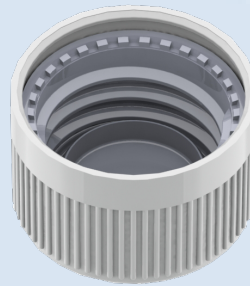




**CERTIFICATE NO.: NET16CRP28-886/127-POM  
CHILD-RESISTANT PACKAGING**

HOLDER OF CERTIFICATE:  
**Emballator Växjö AB, Sweden**

**MANUFACTURER:** Emballator Växjö AB, Smedjegatan 8, SE 35246 Växjö, Sweden  
**CHILD RESISTANT CLOSURE:** 16CRP28-886/127-POM  
**ON VERIFIED CONTAINER:** 200 - 1500 ml



**TEST STANDARD:**

An evaluation of the test results has been done in accordance with NET test method ATM003. The test method is accredited in accordance with ISO17025 approved by Norsk Akkreditering. The child-resistant closure is designed for reclosable packages, as child resistant and suitable for adults according to ISO 8317:2015 and all the test results are within the given tolerance range.

**TEST LABORATORY:  
ANALYSIS:**

NET AS, Norway  
Containers with a valid appendix, combined with 16CR28-886/127-POM, are confirmed as child-resistant and suitable for adults.

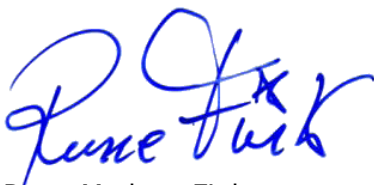
**VALIDITY:**

This certificate is effective together with a valid appendix from NET for the actual container. The certificate is valid until expire date as long as no modifications are made to package, the material, the dimensions or the closure system.

DATE OF CERTIFICATION: **23.05.2025**

CERTIFICATE IS VALID UNTIL:

**31.05.2030**



Rune Madsen Fink  
Control Officer  
BREVIK, NORWAY 23.05.2025  
NET Emballasje- og Produkttesting AS  
Certification

**THE FOLLOWING CLOSURES IS CERTIFIED ACCORDING TO ISO8317:**

Name	Drawing	Material Inner / Outer cap	Gasket
P28-886/127-POM	12492	POM / PPH	Cone

**DOCUMENTS BASED UPON FOR APPROVAL:**

Report id.	Date	Issued by	Scope
06601530314-8317	24.04.14	IVM	Type testing
NET16CR28-886/127-PO M	23.05.25	NET	Type testing

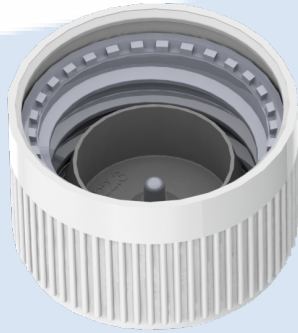




**CERTIFICATE NO.: NET16CRP28-887/127-POM/PLUG  
CHILD-RESISTANT PACKAGING**

HOLDER OF CERTIFICATE:  
**Emballator Växjö AB, Sweden**

**MANUFACTURER:** Emballator Växjö AB, Smedjegatan 8, SE 35246 Växjö, Sweden  
**CHILD RESISTANT CLOSURE:** 16CRP28-887/127-POM/Plug  
**ON VERIFIED CONTAINER:** 200 - 1500 ml



**TEST STANDARD:**

An evaluation of the test results has been done in accordance with NET test method ATM003. The test method is accredited in accordance with ISO17025 approved by Norsk Akkreditering. The child-resistant closure is designed for reclosable packages, as child resistant and suitable for adults according to ISO 8317:2015 and all the test results are within the given tolerance range.

**TEST LABORATORY:  
ANALYSIS:**

NET AS, Norway  
Containers with a valid appendix, combined with 16CRP28-887/127-POM, are confirmed as child-resistant and suitable for adults.

**VALIDITY:**

This certificate is effective together with a valid appendix from NET for the actual container. The certificate is valid until expire date as long as no modifications are made to package, the material, the dimensions or the closure system.

DATE OF CERTIFICATION: **16.06.2025**

CERTIFICATE IS VALID UNTIL:

**31.05.2030**

Rune Madsen Fink  
Control Officer  
BREVIK, NORWAY 16.06.2025  
NET Emballasje- og Produkttesting AS  
Certification

**THE FOLLOWING CLOSURES IS CERTIFIED ACCORDING TO ISO8317:**

Name	Drawing	Material inner / outer cap	Insert
887/127	12494	POM / PPH	P22.3, LDPE

**DOCUMENTS BASED UPON FOR APPROVAL:**

Report id.	Date	Issued by	Conformed by
06601530314-8317	24.04.2014	IVM	Type test
16CRP28	28.05.2025	NET	Type test

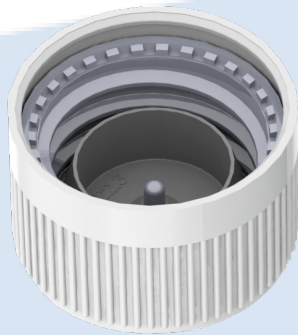




**CERTIFICATE NO.: NET16CRP28-887/127-POM  
CHILD-RESISTANT PACKAGING**

HOLDER OF CERTIFICATE:  
**Emballator Växjö AB, Sweden**

**MANUFACTURER:** Emballator Växjö AB, Smedjegatan 8, SE 35246 Växjö, Sweden  
**CHILD RESISTANT CLOSURE:** 16CRP28-887/127-POM  
**ON VERIFIED CONTAINER:** 200 - 1500 ml



**TEST STANDARD:**

An evaluation of the test results has been done in accordance with NET test method ATM003. The test method is accredited in accordance with ISO17025 approved by Norsk Akkreditering. The child-resistant closure is designed for reclosable packages, as child resistant and suitable for adults according to ISO 8317:2015 and all the test results are within the given tolerance range.

**TEST LABORATORY:  
ANALYSIS:**

NET AS, Norway  
Containers with a valid appendix, combined with 16CRP28-887/127-POM, are confirmed as child-resistant and suitable for adults.

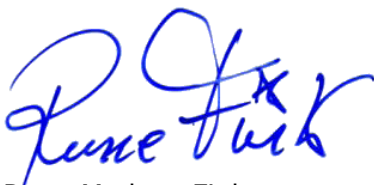
**VALIDITY:**

This certificate is effective together with a valid appendix from NET for the actual container. The certificate is valid until expire date as long as no modifications are made to package, the material, the dimensions or the closure system.

DATE OF CERTIFICATION: **16.06.2025**

CERTIFICATE IS VALID UNTIL:

**31.05.2030**



Rune Madsen Fink  
Control Officer  
BREVIK, NORWAY 16.06.2025  
NET Emballasje- og Produkttesting AS  
Certification

**THE FOLLOWING CLOSURES IS CERTIFIED ACCORDING TO ISO8317:**

Name	Drawing	Material inner / outer cap	Insert
887/127	12494	POM / PPH	P22.3, LDPE

**DOCUMENTS BASED UPON FOR APPROVAL:**

Report id.	Date	Issued by	Conformed by
06601530314-8317	24.04.2014	IVM	Type test
16CRP28	28.05.2025	NET	Type test

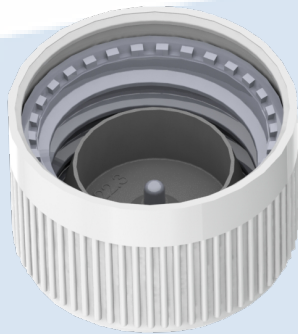




**CERTIFICATE NO.: NET16CRP28-887/127-PPH/PLUG  
CHILD-RESISTANT PACKAGING**

HOLDER OF CERTIFICATE:  
**Emballator Växjö AB, Sweden**

**MANUFACTURER:** Emballator Växjö AB, Smedjegatan 8, SE 35246 Växjö, Sweden  
**CHILD RESISTANT CLOSURE:** 16CRP28-887/127-PPH/Plug  
**ON VERIFIED CONTAINER:** 200 - 1500 ml



**TEST STANDARD:**

An evaluation of the test results has been done in accordance with NET test method ATM003. The test method is accredited in accordance with ISO17025 approved by Norsk Akkreditering. The child-resistant closure is designed for reclosable packages, as child resistant and suitable for adults according to ISO 8317:2015 and all the test results are within the given tolerance range.

**TEST LABORATORY:  
ANALYSIS:**


NET AS, Norway  
Containers with a valid appendix, combined with 16CRP28-887/127-PPH, are confirmed as child-resistant and suitable for adults.

**VALIDITY:**

This certificate is effective together with a valid appendix from NET for the actual container. The certificate is valid until expire date as long as no modifications are made to package, the material, the dimensions or the closure system.

DATE OF CERTIFICATION: **16.06.2025**

CERTIFICATE IS VALID UNTIL: **31.05.2030**



Rune Madsen Fink  
Control Officer  
BREVIK, NORWAY 16.06.2025  
NET Emballasje- og Produkttesting AS  
Certification

**THE FOLLOWING CLOSURES IS CERTIFIED ACCORDING TO ISO8317:**

Name	Drawing	Material inner/ outer cap	Insert
887/127	12432	PPH / PPH	P22.3, LDPE

**DOCUMENTS BASED UPON FOR APPROVAL:**

Report id.	Date	Issued by	Scope
06601530314-8317	24.04.2014	IVM	Type test
16CRP28	28.05.2025	NET	Type test

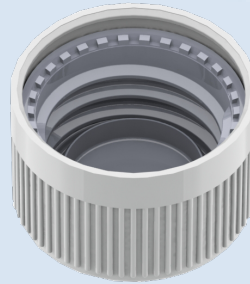




**CERTIFICATE NO.: NET16CRP28-886/127-PPH  
CHILD-RESISTANT PACKAGING**

HOLDER OF CERTIFICATE:  
**Emballator Växjö AB, SWEDEN**

**MANUFACTURER:** Emballator Växjö AB, Smedjegatan 8, 35246, Växjö, Sweden  
**CHILD RESISTANT CLOSURE:** NET16CRP28-886/127-PPH  
**ON VERIFIED CONTAINER:** 200 - 1500 ml



**TEST STANDARD:**

An evaluation of the test results has been done in accordance with NET test method ATM003. The test method is accredited in accordance with ISO17025 approved by Norsk Akkreditering. The child-resistant closure is designed for reclosable packages, as child resistant and suitable for adults according to ISO 8317:2015 and all the test results are within the given tolerance range.

**TEST LABORATORY:  
ANALYSIS:**

NET AS, Norway.

Containers with a valid appendix combined with NET16CRP28-886/127-PPH is confirmed as child resistant and suitable for adults.

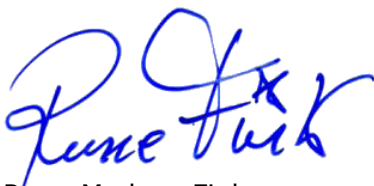
**VALIDITY:**

This certificate is effective together with a valid appendix from NET for the actual container. The certificate is valid until expire date as long as no modifications are made to package, the material, the dimensions or the closure system.

DATE OF CERTIFICATION: **26.05.2025**

CERTIFICATE IS VALID UNTIL:

**31.05.2030**



Rune Madsen Fink  
Control Officer  
BREVIK, NORWAY 26.05.2025  
NET Emballasje- og Produkttesting AS  
Certification

**THE FOLLOWING CLOSURES IS CERTIFIED ACCORDING TO ISO8317:**

Name	Drawing	Material inner / outer cap	Gasket
P28-886/127-PPH	12430	PPH / PPH	Cone

**DOCUMENTS BASED UPON FOR APPROVAL:**

Report id.	Date	Issued by	Scope
06601530314-8317	24.04.2014	IVM	Type test
16CRP28	24.04.2024	NET	Type test
16CR28-886/127	23.05.2025	NET	Type test

