



## CONTAINER APPENDIX

HOLDER OF DOCUMENT:  
**Emballator Växjö AB**

**APPENDIX NO.:** NET16CRP40-01/03  
**TEST LABORATORY:** NET AS  
**TEST PERFORMED BY:** Tonje M Nikolaisen  
**CONTROLLED BY:** Rune Fink  
**MANUFACTURER CLOSURE:** Emballator Växjö AB, Smedjegatan 8, SE 35246 Växjö, Sweden  
**MANUFACTURER CONTAINER:** Emballator Mellerud AB, Industrigatan 6, 464 33 Mellerud, Sweden  
**APPROVAL:** The child-resistant packaging is designed to be reclosable, ensuring safety for children while remaining easy for adults to open and use.



**This appendix is only valid with a valid version of the certificate**

**TEST STANDARD:** All tests are performed in accordance with NET accredited test method ATM003. The test method is accredited in accordance with NS-EN ISO/IEC 17025:2017 approved by Norsk Akkreditering and according to NS-EN ISO 8317:2015 and NS-EN ISO 13274:2013.

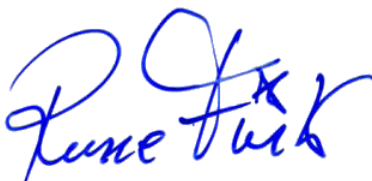


FIRST EVALUATION DATE:

**24.06.2026**

VALID UNTIL:

**30.06.2031**



Rune Madsen Fink  
Control Officer  
BREVIK, NORWAY, 24.06.2026  
NET AS

Tested package	Name	Part/drawing #	Volume	Material	Manufacturing method
Rectangular bottle	E 1L/40 55g of (L)	E0100-400	1L	HDPE	Blow molded

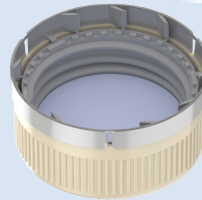
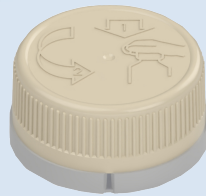




**CERTIFICATE NO.: NET16CR40-983/901F-ALU  
CHILD-RESISTANT PACKAGING**

HOLDER OF CERTIFICATE:  
**Emballator Växjö AB**

**MANUFACTURER:** Emballator Växjö AB, Smedjegatan 8, SE 35246 Växjö, Sweden  
**CHILD RESISTANT CLOSURE:** NET16CR40-983/901F-ALU  
**ON VERIFIED CONTAINER:** 250 ml - 10 000 ml



**TEST STANDARD:**

An evaluation of the test results has been done in accordance with NET test method ATM003. The test method is accredited in accordance with ISO17025 approved by Norsk Akkreditering. The child-resistant closure is designed for reclosable packages, as child resistant and suitable for adults according to ISO 8317:2015 and all the test results are within the given tolerance range.

**TEST LABORATORY:  
ANALYSIS:**

NET AS, Norway

**VALIDITY:**

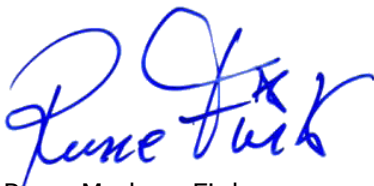
Containers with a valid appendix, combined with 40mm 983/901F ALU, are confirmed as child-resistant and suitable for adults.

This certificate is effective together with a valid appendix from NET for the actual container. The certificate is valid until expire date as long as no modifications are made to package, the material, the dimensions or the closure system.

DATE OF CERTIFICATION: **11.07.2025**

CERTIFICATE IS VALID UNTIL:

**31.07.2030**



Rune Madsen Fink  
Control Officer  
BREVIK, NORWAY 11.07.2025  
NET Emballasje- og Produkttesting AS  
Certification

**THE FOLLOWING CLOSURES IS CERTIFIED ACCORDING TO ISO8317:**

Name	Drawing	Material inner/outer cap	Wad
983/901F ALU	12446A	HDPE / HDPE	EPE / ALU

**DOCUMENTS BASED UPON FOR APPROVAL:**

Report id.	Date	Issued by	Scope
Report 06951530614	21.08.2014	IVM	Type testing
NET16CR40auth	01.07.2025	NET	Type approval

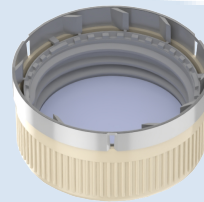
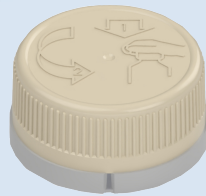




**CERTIFICATE NO.: NET16CR40-983/901F-PET  
CHILD-RESISTANT PACKAGING**

HOLDER OF CERTIFICATE:  
**Emballator Växjö AB**

**MANUFACTURER:** Emballator Växjö AB, Smedjegatan 8, SE 35246 Växjö, Sweden  
**CHILD RESISTANT CLOSURE:** NET16CR40-983/901F-PET  
**ON VERIFIED CONTAINER:** 250ml - 10 000 ml



**TEST STANDARD:**

An evaluation of the test results has been done in accordance with NET test method ATM003. The test method is accredited in accordance with ISO17025 approved by Norsk Akkreditering. The child-resistant closure is designed for reclosable packages, as child resistant and suitable for adults according to ISO 8317:2015 and all the test results are within the given tolerance range.

**TEST LABORATORY:  
ANALYSIS:**

NET AS, Norway

**VALIDITY:**

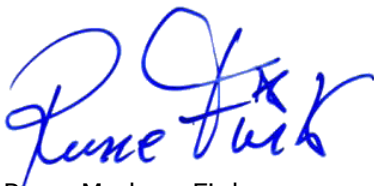
Containers with a valid appendix, combined with 40mm 983/901F PET, are confirmed as child-resistant and suitable for adults.

This certificate is effective together with a valid appendix from NET for the actual container. The certificate is valid until expire date as long as no modifications are made to package, the material, the dimensions or the closure system.

DATE OF CERTIFICATION: **11.07.2025**

CERTIFICATE IS VALID UNTIL:

**31.07.2030**



Rune Madsen Fink  
Control Officer  
BREVIK, NORWAY 11.07.2025  
NET Emballasje- og Produkttesting AS  
Certification

**THE FOLLOWING CLOSURES IS CERTIFIED ACCORDING TO ISO8317:**

Name	Drawing	Material inner/outer cap	Wad
983/901F PET	12446A	HDPE/HDPE	EPE/ PET

**DOCUMENTS BASED UPON FOR APPROVAL:**

Report id.	Date	Issued by	Scope
Report 06951530614	21.08.2014	IVM	Type testing
NET16CR40auth	01.07.2025	NET	Type approval

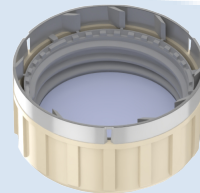
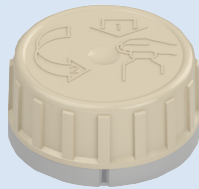




**CERTIFICATE NO.: NET16CR40-983/901G-ALU  
CHILD-RESISTANT PACKAGING**

HOLDER OF CERTIFICATE:  
**Emballator Växjö AB**

**MANUFACTURER:** Emballator Växjö AB, Smedjegatan 8, SE 35246 Växjö, Sweden  
**CHILD RESISTANT CLOSURE:** NET16CR40-983/901G-ALU  
**ON VERIFIED CONTAINER:** 250 ml - 10 000 ml



**TEST STANDARD:**

An evaluation of the test results has been done in accordance with NET test method ATM003. The test method is accredited in accordance with ISO17025 approved by Norsk Akkreditering. The child-resistant closure is designed for reclosable packages, as child resistant and suitable for adults according to ISO 8317:2015 and all the test results are within the given tolerance range.

**TEST LABORATORY:**

NET AS, Norway

**ANALYSIS:**

Containers with a valid appendix, combined with 40mm 983/901G Alu, are confirmed as child-resistant and suitable for adults.

**VALIDITY:**

This certificate is effective together with a valid appendix from NET for the actual container. The certificate is valid until expire date as long as no modifications are made to package, the material, the dimensions or the closure system.

DATE OF CERTIFICATION: **11.07.2025**

CERTIFICATE IS VALID UNTIL:

**31.07.2030**

Rune Madsen Fink  
Control Officer  
BREVIK, NORWAY 11.07.2025  
NET Emballasje- og Produkttesting AS  
Certification

**THE FOLLOWING CLOSURES IS CERTIFIED ACCORDING TO ISO8317:**

Name	Drawing	Material inner/outer	Wad
40-983/901G ALU	12445	HDPE / HDPE	EPE/ALU

**DOCUMENTS BASED UPON FOR APPROVAL:**

Report id.	Date	Issued by	Scope
Report 06951530614	21.08.2014	IVM	Type testing
NET16CR40auth	01.07.2025	NET	Type approval

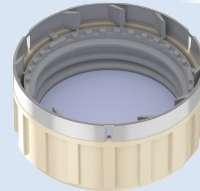
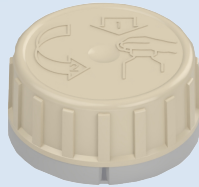




**CERTIFICATE NO.: NET16CR40-983/901G-PET  
CHILD-RESISTANT PACKAGING**

HOLDER OF CERTIFICATE:  
**Emballator Växjö AB**

**MANUFACTURER:** Emballator Växjö AB, Smedjegatan 8, SE 35246 Växjö, Sweden  
**CHILD RESISTANT CLOSURE:** NET16CR40-983/901G-PET  
**ON VERIFIED CONTAINER:** 250 ml - 10 000 ml



**TEST STANDARD:**

An evaluation of the test results has been done in accordance with NET test method ATM003. The test method is accredited in accordance with ISO17025 approved by Norsk Akkreditering. The child-resistant closure is designed for reclosable packages, as child resistant and suitable for adults according to ISO 8317:2015 and all the test results are within the given tolerance range.

**TEST LABORATORY:**

NET AS, Norway

**ANALYSIS:**

Containers with a valid appendix, combined with 40mm 983/901G PET, are confirmed as child-resistant and suitable for adults.

**VALIDITY:**

This certificate is effective together with a valid appendix from NET for the actual container. The certificate is valid until expire date as long as no modifications are made to package, the material, the dimensions or the closure system.

DATE OF CERTIFICATION: **26.09.2025**

CERTIFICATE IS VALID UNTIL:

**31.07.2030**



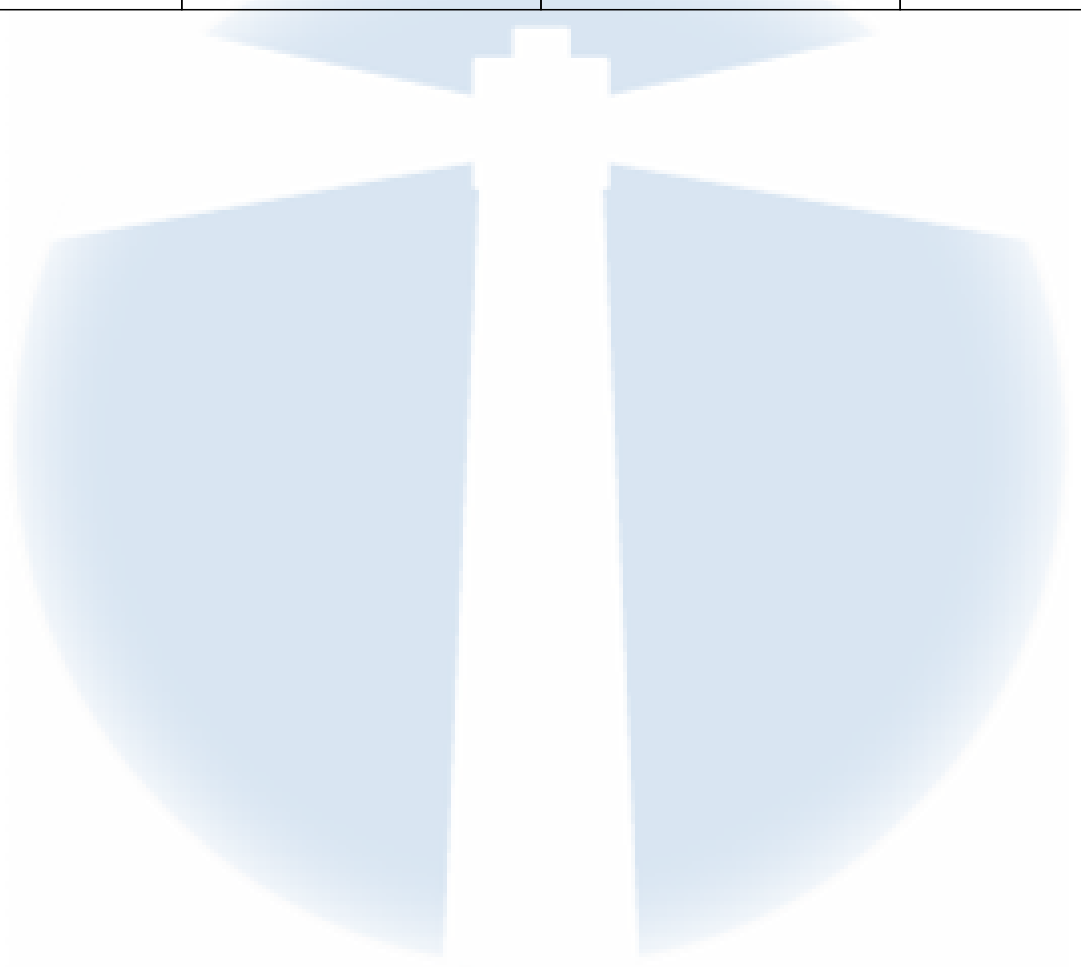
Rune Madsen Fink  
Control Officer  
BREVIK, NORWAY 26.09.2025  
NET Emballasje- og Produkttesting AS  
Certification

**THE FOLLOWING CLOSURES IS CERTIFIED ACCORDING TO ISO8317:**

Name	Drawing	Materiale Inner/outer cap	Wad
P40-983/901G PET	12445	HDPE/HDPE	EPE/PET

**DOCUMENTS BASED UPON FOR APPROVAL:**

Report id.	Date	Issued by	Scope
Report 06951530614	21.08.2014	IVM	Type testing
NET16CR40auth	01.07.2025	NET	Type approval
NET16CR40-983/901G-PET	19.09.2025	NET	Type testing

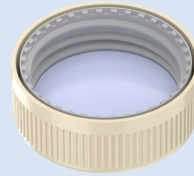




**CERTIFICATE NO.: NET16CR40-985/901F ALU  
CHILD-RESISTANT PACKAGING**

HOLDER OF CERTIFICATE:  
**Emballator Växjö AB**

**MANUFACTURER:** Emballator Växjö AB, Smedjegatan 8, SE 35246 Växjö, Sweden  
**CHILD RESISTANT CLOSURE:** NET16CR40-985/901F ALU  
**ON VERIFIED CONTAINER:** 250 ml - 10 000 ml



**TEST STANDARD:**

An evaluation of the test results has been done in accordance with NET test method ATM003. The test method is accredited in accordance with ISO17025 approved by Norsk Akkreditering. The child-resistant closure is designed for reclosable packages, as child resistant and suitable for adults according to ISO 8317:2015 and all the test results are within the given tolerance range.

**TEST LABORATORY:  
ANALYSIS:**

NET AS, Norway

**VALIDITY:**

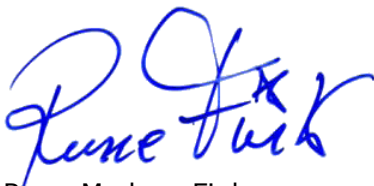
Containers with a valid appendix, combined with 40mm 985/901F ALU, are confirmed as child-resistant and suitable for adults.

This certificate is effective together with a valid appendix from NET for the actual container. The certificate is valid until expire date as long as no modifications are made to package, the material, the dimensions or the closure system.

DATE OF CERTIFICATION: **11.07.2025**

CERTIFICATE IS VALID UNTIL:

**31.07.2030**



Rune Madsen Fink  
Control Officer  
BREVIK, NORWAY 11.07.2025  
NET Emballasje- og Produkttesting AS  
Certification

**THE FOLLOWING CLOSURES IS CERTIFIED ACCORDING TO ISO8317:**

Name	Drawing	Material inner-/outer cap	Wad
985/901F ALU	12449A	HDPE/HDPE	EPE/ALU

**DOCUMENTS BASED UPON FOR APPROVAL:**

Report id.	Date	Issued by	Scope
Report 06951530614	21.08.2014	IVM	Type testing
NET16CR40auth	01.07.2025	NET	Type approval

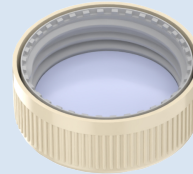




**CERTIFICATE NO.: NET16CR40-985/901F PET  
CHILD-RESISTANT PACKAGING**

HOLDER OF CERTIFICATE:  
**Emballator Växjö AB**

**MANUFACTURER:** Emballator Växjö AB, Smedjegatan 8, SE 35246 Växjö, Sweden  
**CHILD RESISTANT CLOSURE:** NET16CR40-985/901F PET  
**ON VERIFIED CONTAINER:** 250 ml - 10 000 ml



**TEST STANDARD:**

An evaluation of the test results has been done in accordance with NET test method ATM003. The test method is accredited in accordance with ISO17025 approved by Norsk Akkreditering. The child-resistant closure is designed for reclosable packages, as child resistant and suitable for adults according to ISO 8317:2015 and all the test results are within the given tolerance range.

**TEST LABORATORY:  
ANALYSIS:**

NET AS, Norway

**VALIDITY:**

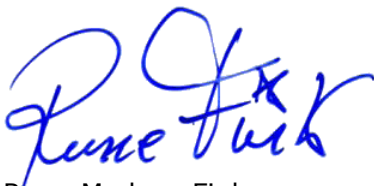
Containers with a valid appendix, combined with 40mm 985/901F PET, are confirmed as child-resistant and suitable for adults.

This certificate is effective together with a valid appendix from NET for the actual container. The certificate is valid until expire date as long as no modifications are made to package, the material, the dimensions or the closure system.

DATE OF CERTIFICATION: **11.07.2025**

CERTIFICATE IS VALID UNTIL:

**31.07.2030**



Rune Madsen Fink  
Control Officer  
BREVIK, NORWAY 11.07.2025  
NET Emballasje- og Produkttesting AS  
Certification

**THE FOLLOWING CLOSURES IS CERTIFIED ACCORDING TO ISO8317:**

Name	Drawing	Material inner/outer cap	Wad
985/901F PET	12449A	HDPE/HDPE	EPE/PET

**DOCUMENTS BASED UPON FOR APPROVAL:**

Report id.	Date	Issued by	Scope
Report 06951530614	21.08.2014	IVM	Type testing
NET16CR40auth	01.07.2025	NET	Type approval

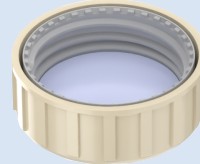




**CERTIFICATE NO.: NET16CR40-985/901G ALU  
CHILD-RESISTANT PACKAGING**

HOLDER OF CERTIFICATE:  
**Emballator Växjö AB**

**MANUFACTURER:** Emballator Växjö AB, Smedjegatan 8, SE 35246 Växjö, Sweden  
**CHILD RESISTANT CLOSURE:** NET16CR40-985/901G ALU  
**ON VERIFIED CONTAINER:** 250 ml - 10 000ml



**TEST STANDARD:**

An evaluation of the test results has been done in accordance with NET test method ATM003. The test method is accredited in accordance with ISO17025 approved by Norsk Akkreditering. The child-resistant closure is designed for reclosable packages, as child resistant and suitable for adults according to ISO 8317:2015 and all the test results are within the given tolerance range.

**TEST LABORATORY:  
ANALYSIS:**

NET AS, Norway

**VALIDITY:**

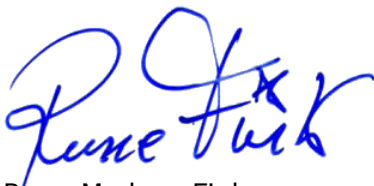
Containers with a valid appendix, combined with 40mm 985/901G ALU, are confirmed as child-resistant and suitable for adults.

This certificate is effective together with a valid appendix from NET for the actual container. The certificate is valid until expire date as long as no modifications are made to package, the material, the dimensions or the closure system.

DATE OF CERTIFICATION: **11.07.2025**

CERTIFICATE IS VALID UNTIL:

**31.07.2030**



Rune Madsen Fink  
Control Officer  
BREVIK, NORWAY 11.07.2025  
NET Emballasje- og Produkttesting AS  
Certification

**THE FOLLOWING CLOSURES IS CERTIFIED ACCORDING TO ISO8317:**

Name	Drawing	Material inner-/outer cap	Wad
985/901G ALU	12448	HDPE/HDPE	EPE/ALU

**DOCUMENTS BASED UPON FOR APPROVAL:**

Report id.	Date	Issued by	Scope
Report 06951530614	21.08.2014	IVM	Type testing
NET16CR40auth	01.07.2025	NET	Type approval

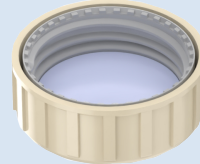




**CERTIFICATE NO.: 16CR40-985/901G PET  
CHILD-RESISTANT PACKAGING**

HOLDER OF CERTIFICATE:  
**Emballator Växjö AB**

**MANUFACTURER:** Emballator Växjö AB, Smedjegatan 8, SE 35246 Växjö, Sweden  
**CHILD RESISTANT CLOSURE:** NET16CR40-985/901G PET  
**ON VERIFIED CONTAINER:** 250ml - 10 000 ml



**TEST STANDARD:**

An evaluation of the test results has been done in accordance with NET test method ATM003. The test method is accredited in accordance with ISO17025 approved by Norsk Akkreditering. The child-resistant closure is designed for reclosable packages, as child resistant and suitable for adults according to ISO 8317:2015 and all the test results are within the given tolerance range.

**TEST LABORATORY:  
ANALYSIS:**

NET AS, Norway

**VALIDITY:**

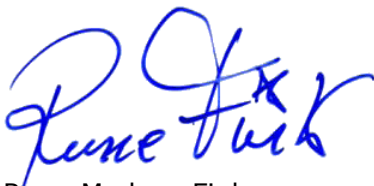
Containers with a valid appendix, combined with 40mm 985/901G PET, are confirmed as child-resistant and suitable for adults.

This certificate is effective together with a valid appendix from NET for the actual container. The certificate is valid until expire date as long as no modifications are made to package, the material, the dimensions or the closure system.

DATE OF CERTIFICATION: **11.07.2025**

CERTIFICATE IS VALID UNTIL:

**31.07.2030**



Rune Madsen Fink  
Control Officer  
BREVIK, NORWAY 11.07.2025  
NET Emballasje- og Produkttesting AS  
Certification

**THE FOLLOWING CLOSURES IS CERTIFIED ACCORDING TO ISO8317:**

Name	Drawing	Material inner/outer cap	Wad
985/901G PET	12448	HDPE/HDPE	EPE/PET

**DOCUMENTS BASED UPON FOR APPROVAL:**

Report id.	Date	Issued by	Scope
Report 06951530614	21.08.2014	IVM	Type testing
NET16CR40auth	01.07.2025	NET	Type approval

