



CONTAINER APPENDIX

HOLDER OF DOCUMENT:
Emballator Växjö AB

APPENDIX NO.: NET16CRP40-01/06
TEST LABORATORY: NET AS
TEST PERFORMED BY: Tonje M Nikolaisen
CONTROLLED BY: Rune Fink
MANUFACTURER CLOSURE: Emballator Växjö AB, Smedjegatan 8, SE 35246 Växjö, Sweden
MANUFACTURER CONTAINER: Emballator Mellerud AB, Industrigatan 6, 464 33 Mellerud, Sweden
APPROVAL: The child-resistant packaging is designed to be reclosable, ensuring safety for children while remaining easy for adults to open and use.



This appendix is only valid with a valid version of the certificate


TEST STANDARD: All tests are performed in accordance with NET accredited test method ATM003. The test method is accredited in accordance with NS-EN ISO/IEC 17025:2017 approved by Norsk Akkreditering and according to NS-EN ISO 8317:2015 and NS-EN ISO 13274:2013.



FIRST EVALUATION DATE: **24.06.2026**

VALID UNTIL:

30.06.2031



Rune Madsen Fink
Control Officer
BREVIK, NORWAY, 24.06.2026
NET AS

Tested package	Name	Part/drawing #	Volume	Material	Manufacturing method
Canister	H 5L/40 Ultimat 205g of, skala, taktilm	H0500-410-450	5L	HDPE	Blow molded

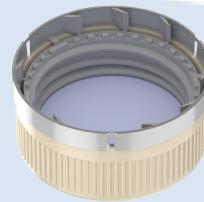
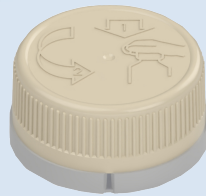




**CERTIFICATE NO.: NET16CR40-983/901F-ALU
CHILD-RESISTANT PACKAGING**

HOLDER OF CERTIFICATE:
Emballator Växjö AB

MANUFACTURER: Emballator Växjö AB, Smedjegatan 8, SE 35246 Växjö, Sweden
CHILD RESISTANT CLOSURE: NET16CR40-983/901F-ALU
ON VERIFIED CONTAINER: 250 ml - 10 000 ml



TEST STANDARD:

An evaluation of the test results has been done in accordance with NET test method ATM003. The test method is accredited in accordance with ISO17025 approved by Norsk Akkreditering. The child-resistant closure is designed for reclosable packages, as child resistant and suitable for adults according to ISO 8317:2015 and all the test results are within the given tolerance range.

**TEST LABORATORY:
ANALYSIS:**

NET AS, Norway

VALIDITY:

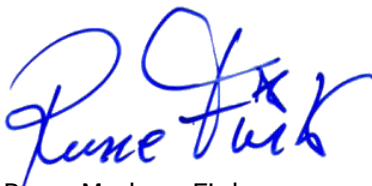
Containers with a valid appendix, combined with 40mm 983/901F ALU, are confirmed as child-resistant and suitable for adults.

This certificate is effective together with a valid appendix from NET for the actual container. The certificate is valid until expire date as long as no modifications are made to package, the material, the dimensions or the closure system.

DATE OF CERTIFICATION: **11.07.2025**

CERTIFICATE IS VALID UNTIL:

31.07.2030



Rune Madsen Fink
Control Officer
BREVIK, NORWAY 11.07.2025
NET Emballasje- og Produkttesting AS
Certification

THE FOLLOWING CLOSURES IS CERTIFIED ACCORDING TO ISO8317:

Name	Drawing	Material inner/outer cap	Wad
983/901F ALU	12446A	HDPE / HDPE	EPE / ALU

DOCUMENTS BASED UPON FOR APPROVAL:

Report id.	Date	Issued by	Scope
Report 06951530614	21.08.2014	IVM	Type testing
NET16CR40auth	01.07.2025	NET	Type approval

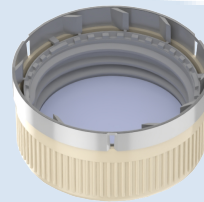
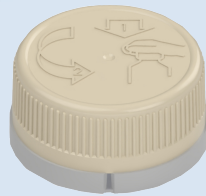




**CERTIFICATE NO.: NET16CR40-983/901F-PET
CHILD-RESISTANT PACKAGING**

HOLDER OF CERTIFICATE:
Emballator Växjö AB

MANUFACTURER: Emballator Växjö AB, Smedjegatan 8, SE 35246 Växjö, Sweden
CHILD RESISTANT CLOSURE: NET16CR40-983/901F-PET
ON VERIFIED CONTAINER: 250ml - 10 000 ml



TEST STANDARD:

An evaluation of the test results has been done in accordance with NET test method ATM003. The test method is accredited in accordance with ISO17025 approved by Norsk Akkreditering. The child-resistant closure is designed for reclosable packages, as child resistant and suitable for adults according to ISO 8317:2015 and all the test results are within the given tolerance range.

**TEST LABORATORY:
ANALYSIS:**

NET AS, Norway

VALIDITY:

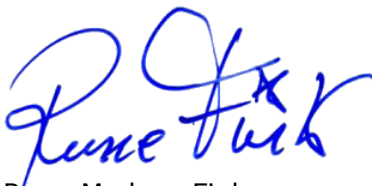
Containers with a valid appendix, combined with 40mm 983/901F PET, are confirmed as child-resistant and suitable for adults.

This certificate is effective together with a valid appendix from NET for the actual container. The certificate is valid until expire date as long as no modifications are made to package, the material, the dimensions or the closure system.

DATE OF CERTIFICATION: **11.07.2025**

CERTIFICATE IS VALID UNTIL:

31.07.2030



Rune Madsen Fink
Control Officer
BREVIK, NORWAY 11.07.2025
NET Emballasje- og Produkttesting AS
Certification

THE FOLLOWING CLOSURES IS CERTIFIED ACCORDING TO ISO8317:

Name	Drawing	Material inner/outer cap	Wad
983/901F PET	12446A	HDPE/HDPE	EPE/ PET

DOCUMENTS BASED UPON FOR APPROVAL:

Report id.	Date	Issued by	Scope
Report 06951530614	21.08.2014	IVM	Type testing
NET16CR40auth	01.07.2025	NET	Type approval

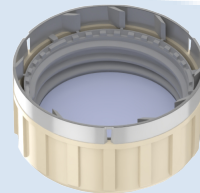
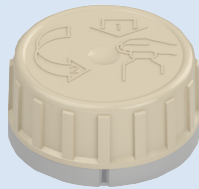




**CERTIFICATE NO.: NET16CR40-983/901G-ALU
CHILD-RESISTANT PACKAGING**

HOLDER OF CERTIFICATE:
Emballator Växjö AB

MANUFACTURER: Emballator Växjö AB, Smedjegatan 8, SE 35246 Växjö, Sweden
CHILD RESISTANT CLOSURE: NET16CR40-983/901G-ALU
ON VERIFIED CONTAINER: 250 ml - 10 000 ml



TEST STANDARD:

An evaluation of the test results has been done in accordance with NET test method ATM003. The test method is accredited in accordance with ISO17025 approved by Norsk Akkreditering. The child-resistant closure is designed for reclosable packages, as child resistant and suitable for adults according to ISO 8317:2015 and all the test results are within the given tolerance range.

TEST LABORATORY:

NET AS, Norway

ANALYSIS:

Containers with a valid appendix, combined with 40mm 983/901G Alu, are confirmed as child-resistant and suitable for adults.

VALIDITY:

This certificate is effective together with a valid appendix from NET for the actual container. The certificate is valid until expire date as long as no modifications are made to package, the material, the dimensions or the closure system.

DATE OF CERTIFICATION: **11.07.2025**

CERTIFICATE IS VALID UNTIL:

31.07.2030

Rune Madsen Fink
Control Officer
BREVIK, NORWAY 11.07.2025
NET Emballasje- og Produkttesting AS
Certification

THE FOLLOWING CLOSURES IS CERTIFIED ACCORDING TO ISO8317:

Name	Drawing	Material inner/outer	Wad
40-983/901G ALU	12445	HDPE / HDPE	EPE/ALU

DOCUMENTS BASED UPON FOR APPROVAL:

Report id.	Date	Issued by	Scope
Report 06951530614	21.08.2014	IVM	Type testing
NET16CR40auth	01.07.2025	NET	Type approval

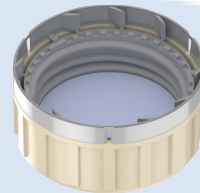
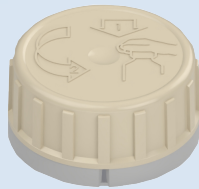




**CERTIFICATE NO.: NET16CR40-983/901G-PET
CHILD-RESISTANT PACKAGING**

HOLDER OF CERTIFICATE:
Emballator Växjö AB

MANUFACTURER: Emballator Växjö AB, Smedjegatan 8, SE 35246 Växjö, Sweden
CHILD RESISTANT CLOSURE: NET16CR40-983/901G-PET
ON VERIFIED CONTAINER: 250 ml - 10 000 ml



TEST STANDARD:

An evaluation of the test results has been done in accordance with NET test method ATM003. The test method is accredited in accordance with ISO17025 approved by Norsk Akkreditering. The child-resistant closure is designed for reclosable packages, as child resistant and suitable for adults according to ISO 8317:2015 and all the test results are within the given tolerance range.

TEST LABORATORY:

NET AS, Norway

ANALYSIS:

Containers with a valid appendix, combined with 40mm 983/901G PET, are confirmed as child-resistant and suitable for adults.

VALIDITY:

This certificate is effective together with a valid appendix from NET for the actual container. The certificate is valid until expire date as long as no modifications are made to package, the material, the dimensions or the closure system.

DATE OF CERTIFICATION: **26.09.2025**

CERTIFICATE IS VALID UNTIL:

31.07.2030

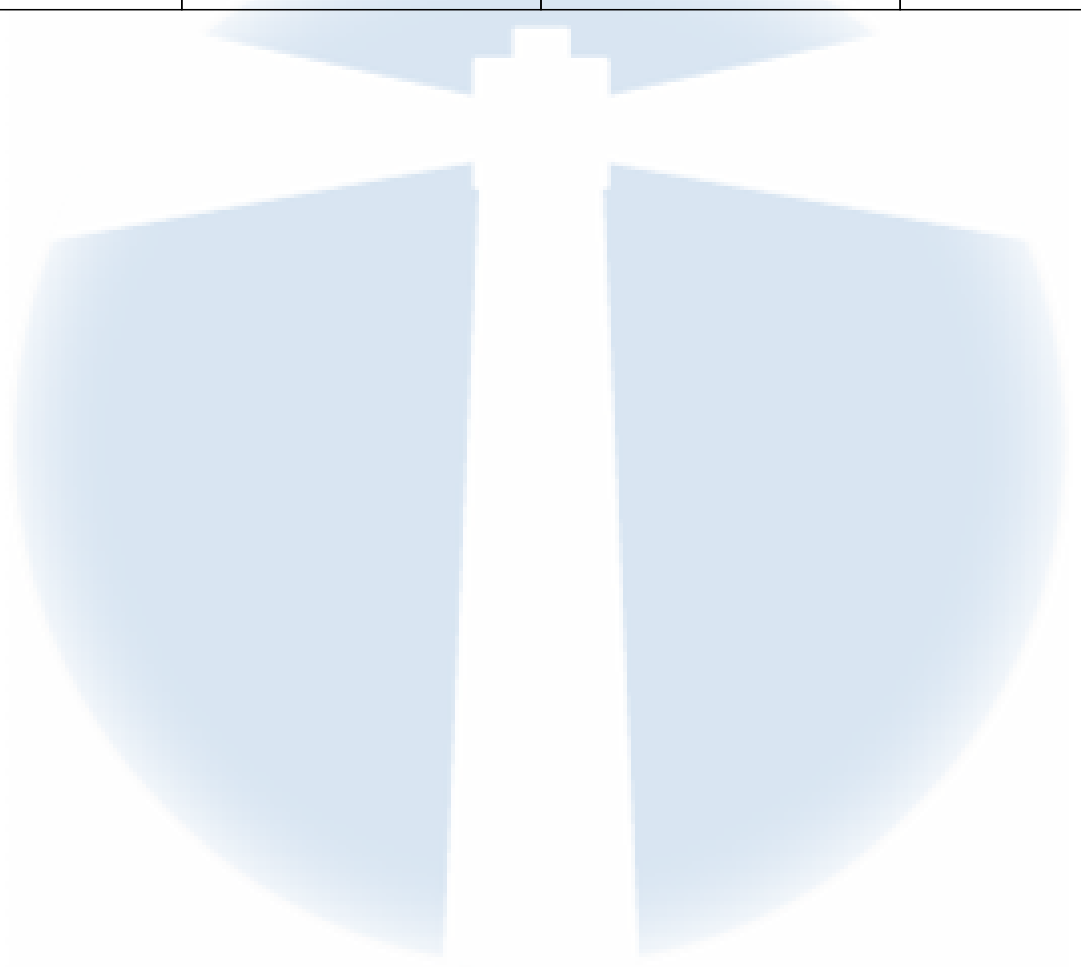
Rune Madsen Fink
Control Officer
BREVIK, NORWAY 26.09.2025
NET Emballasje- og Produkttesting AS
Certification

THE FOLLOWING CLOSURES IS CERTIFIED ACCORDING TO ISO8317:

Name	Drawing	Materiale Inner/outer cap	Wad
P40-983/901G PET	12445	HDPE/HDPE	EPE/PET

DOCUMENTS BASED UPON FOR APPROVAL:

Report id.	Date	Issued by	Scope
Report 06951530614	21.08.2014	IVM	Type testing
NET16CR40auth	01.07.2025	NET	Type approval
NET16CR40-983/901G-PET	19.09.2025	NET	Type testing

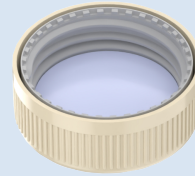




**CERTIFICATE NO.: NET16CR40-985/901F ALU
CHILD-RESISTANT PACKAGING**

HOLDER OF CERTIFICATE:
Emballator Växjö AB

MANUFACTURER: Emballator Växjö AB, Smedjegatan 8, SE 35246 Växjö, Sweden
CHILD RESISTANT CLOSURE: NET16CR40-985/901F ALU
ON VERIFIED CONTAINER: 250 ml - 10 000 ml



TEST STANDARD:

An evaluation of the test results has been done in accordance with NET test method ATM003. The test method is accredited in accordance with ISO17025 approved by Norsk Akkreditering. The child-resistant closure is designed for reclosable packages, as child resistant and suitable for adults according to ISO 8317:2015 and all the test results are within the given tolerance range.

**TEST LABORATORY:
ANALYSIS:**

NET AS, Norway

VALIDITY:

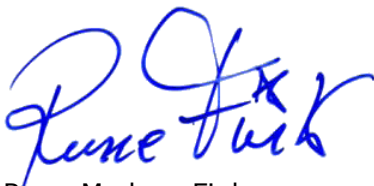
Containers with a valid appendix, combined with 40mm 985/901F ALU, are confirmed as child-resistant and suitable for adults.

This certificate is effective together with a valid appendix from NET for the actual container. The certificate is valid until expire date as long as no modifications are made to package, the material, the dimensions or the closure system.

DATE OF CERTIFICATION: **11.07.2025**

CERTIFICATE IS VALID UNTIL:

31.07.2030



Rune Madsen Fink
Control Officer
BREVIK, NORWAY 11.07.2025
NET Emballasje- og Produkttesting AS
Certification

THE FOLLOWING CLOSURES IS CERTIFIED ACCORDING TO ISO8317:

Name	Drawing	Material inner-/outer cap	Wad
985/901F ALU	12449A	HDPE/HDPE	EPE/ALU

DOCUMENTS BASED UPON FOR APPROVAL:

Report id.	Date	Issued by	Scope
Report 06951530614	21.08.2014	IVM	Type testing
NET16CR40auth	01.07.2025	NET	Type approval

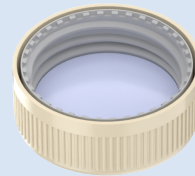




**CERTIFICATE NO.: NET16CR40-985/901F PET
CHILD-RESISTANT PACKAGING**

HOLDER OF CERTIFICATE:
Emballator Växjö AB

MANUFACTURER: Emballator Växjö AB, Smedjegatan 8, SE 35246 Växjö, Sweden
CHILD RESISTANT CLOSURE: NET16CR40-985/901F PET
ON VERIFIED CONTAINER: 250 ml - 10 000 ml



TEST STANDARD:

An evaluation of the test results has been done in accordance with NET test method ATM003. The test method is accredited in accordance with ISO17025 approved by Norsk Akkreditering. The child-resistant closure is designed for reclosable packages, as child resistant and suitable for adults according to ISO 8317:2015 and all the test results are within the given tolerance range.

**TEST LABORATORY:
ANALYSIS:**

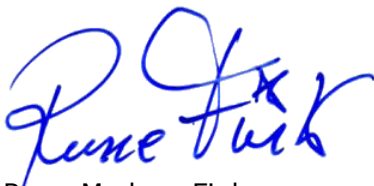
NET AS, Norway
Containers with a valid appendix, combined with 40mm 985/901F PET, are confirmed as child-resistant and suitable for adults.

VALIDITY:

This certificate is effective together with a valid appendix from NET for the actual container. The certificate is valid until expire date as long as no modifications are made to package, the material, the dimensions or the closure system.

DATE OF CERTIFICATION: **11.07.2025**

CERTIFICATE IS VALID UNTIL: **31.07.2030**



Rune Madsen Fink
Control Officer
BREVIK, NORWAY 11.07.2025
NET Emballasje- og Produkttesting AS
Certification

THE FOLLOWING CLOSURES IS CERTIFIED ACCORDING TO ISO8317:

Name	Drawing	Material inner/outer cap	Wad
985/901F PET	12449A	HDPE/HDPE	EPE/PET

DOCUMENTS BASED UPON FOR APPROVAL:

Report id.	Date	Issued by	Scope
Report 06951530614	21.08.2014	IVM	Type testing
NET16CR40auth	01.07.2025	NET	Type approval

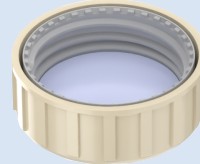




**CERTIFICATE NO.: NET16CR40-985/901G ALU
CHILD-RESISTANT PACKAGING**

HOLDER OF CERTIFICATE:
Emballator Växjö AB

MANUFACTURER: Emballator Växjö AB, Smedjegatan 8, SE 35246 Växjö, Sweden
CHILD RESISTANT CLOSURE: NET16CR40-985/901G ALU
ON VERIFIED CONTAINER: 250 ml - 10 000ml



TEST STANDARD:

An evaluation of the test results has been done in accordance with NET test method ATM003. The test method is accredited in accordance with ISO17025 approved by Norsk Akkreditering. The child-resistant closure is designed for reclosable packages, as child resistant and suitable for adults according to ISO 8317:2015 and all the test results are within the given tolerance range.

**TEST LABORATORY:
ANALYSIS:**

NET AS, Norway

VALIDITY:

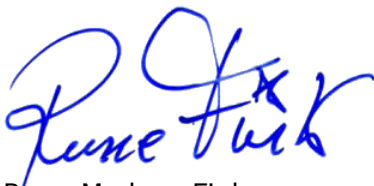
Containers with a valid appendix, combined with 40mm 985/901G ALU, are confirmed as child-resistant and suitable for adults.

This certificate is effective together with a valid appendix from NET for the actual container. The certificate is valid until expire date as long as no modifications are made to package, the material, the dimensions or the closure system.

DATE OF CERTIFICATION: **11.07.2025**

CERTIFICATE IS VALID UNTIL:

31.07.2030



Rune Madsen Fink
Control Officer
BREVIK, NORWAY 11.07.2025
NET Emballasje- og Produkttesting AS
Certification

THE FOLLOWING CLOSURES IS CERTIFIED ACCORDING TO ISO8317:

Name	Drawing	Material inner-/outer cap	Wad
985/901G ALU	12448	HDPE/HDPE	EPE/ALU

DOCUMENTS BASED UPON FOR APPROVAL:

Report id.	Date	Issued by	Scope
Report 06951530614	21.08.2014	IVM	Type testing
NET16CR40auth	01.07.2025	NET	Type approval

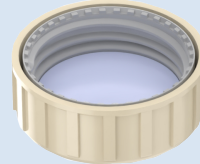




**CERTIFICATE NO.: 16CR40-985/901G PET
CHILD-RESISTANT PACKAGING**

HOLDER OF CERTIFICATE:
Emballator Växjö AB

MANUFACTURER: Emballator Växjö AB, Smedjegatan 8, SE 35246 Växjö, Sweden
CHILD RESISTANT CLOSURE: NET16CR40-985/901G PET
ON VERIFIED CONTAINER: 250ml - 10 000 ml



TEST STANDARD:

An evaluation of the test results has been done in accordance with NET test method ATM003. The test method is accredited in accordance with ISO17025 approved by Norsk Akkreditering. The child-resistant closure is designed for reclosable packages, as child resistant and suitable for adults according to ISO 8317:2015 and all the test results are within the given tolerance range.

**TEST LABORATORY:
ANALYSIS:**

NET AS, Norway

VALIDITY:

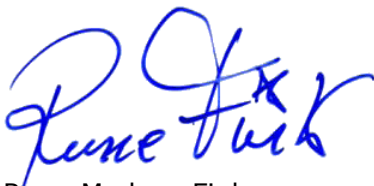
Containers with a valid appendix, combined with 40mm 985/901G PET, are confirmed as child-resistant and suitable for adults.

This certificate is effective together with a valid appendix from NET for the actual container. The certificate is valid until expire date as long as no modifications are made to package, the material, the dimensions or the closure system.

DATE OF CERTIFICATION: **11.07.2025**

CERTIFICATE IS VALID UNTIL:

31.07.2030



Rune Madsen Fink
Control Officer
BREVIK, NORWAY 11.07.2025
NET Emballasje- og Produkttesting AS
Certification

THE FOLLOWING CLOSURES IS CERTIFIED ACCORDING TO ISO8317:

Name	Drawing	Material inner/outer cap	Wad
985/901G PET	12448	HDPE/HDPE	EPE/PET

DOCUMENTS BASED UPON FOR APPROVAL:

Report id.	Date	Issued by	Scope
Report 06951530614	21.08.2014	IVM	Type testing
NET16CR40auth	01.07.2025	NET	Type approval

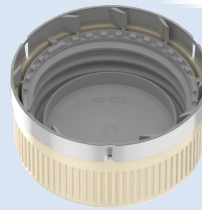




CERTIFICATE NO.: NET16CRP40-900/901F
CHILD-RESISTANT PACKAGING

HOLDER OF CERTIFICATE:
Emballator Växjö AB

MANUFACTURER: Emballator Växjö AB, Smedjegatan 8, SE 35246 Växjö, Sweden
CHILD RESISTANT CLOSURE: NET16CRP40-900/901F
ON VERIFIED CONTAINER: 250 ml - 10 000 ml



TEST STANDARD:

An evaluation of the test results has been done in accordance with NET test method ATM003. The test method is accredited in accordance with ISO17025 approved by Norsk Akkreditering. The child-resistant closure is designed for reclosable packages, as child resistant and suitable for adults according to ISO 8317:2015 and all the test results are within the given tolerance range.

**TEST LABORATORY:
ANALYSIS:**

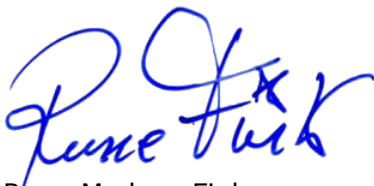
NET AS, Norway
Containers with a valid appendix, combined with P40-900/901F, are confirmed as child-resistant and suitable for adults.

VALIDITY:

This certificate is effective together with a valid appendix from NET for the actual container. The certificate is valid until expire date as long as no modifications are made to package, the material, the dimensions or the closure system.

DATE OF CERTIFICATION: **07.11.2025**

CERTIFICATE IS VALID UNTIL: **30.11.2030**



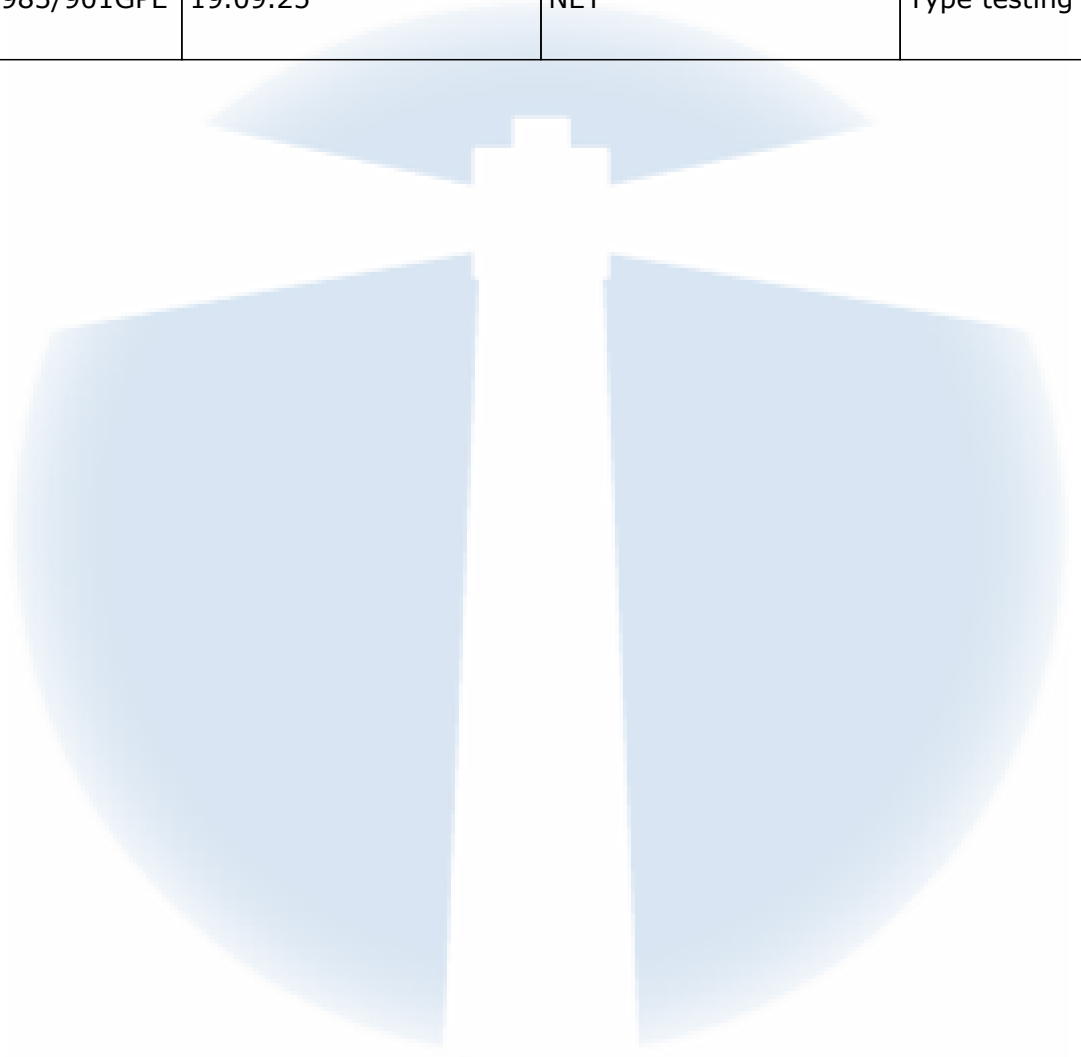
Rune Madsen Fink
Control Officer
BREVIK, NORWAY 07.11.2025
NET Emballasje- og Produkttesting AS
Certification

THE FOLLOWING CLOSURES IS CERTIFIED ACCORDING TO ISO8317:

Name	Drawing	Material inner/outer	Insert
P40-900/901F	12440A	HDPE/HDPE	Cone

DOCUMENTS BASED UPON FOR APPROVAL:

Report id.	Date	Issued by	Scope
Report 06951530614	21.08.14	IVM	Type testing
NET16CR40-983/901GPE T	19.09.25	NET	Type testing

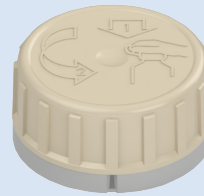
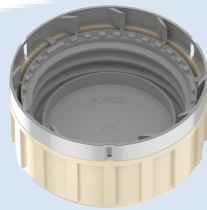




CERTIFICATE NO.: NET16CRP40-900/901G
CHILD-RESISTANT PACKAGING

HOLDER OF CERTIFICATE:
Emballator Växjö AB

MANUFACTURER: Emballator Växjö AB, Smedjegatan 8, SE 35246 Växjö, Sweden
CHILD RESISTANT CLOSURE: NET16CRP40-900/901G
ON VERIFIED CONTAINER: 250 ml - 10 000 ml



TEST STANDARD:

An evaluation of the test results has been done in accordance with NET test method ATM003. The test method is accredited in accordance with ISO17025 approved by Norsk Akkreditering. The child-resistant closure is designed for reclosable packages, as child resistant and suitable for adults according to ISO 8317:2015 and all the test results are within the given tolerance range.

**TEST LABORATORY:
ANALYSIS:**

NET AS, Norway
Containers with a valid appendix, combined with P40-900/901G, are confirmed as child-resistant and suitable for adults.

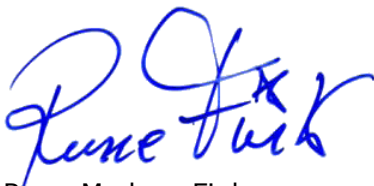
VALIDITY:

This certificate is effective together with a valid appendix from NET for the actual container. The certificate is valid until expire date as long as no modifications are made to package, the material, the dimensions or the closure system.

DATE OF CERTIFICATION: **07.11.2025**

CERTIFICATE IS VALID UNTIL:

30.11.2030



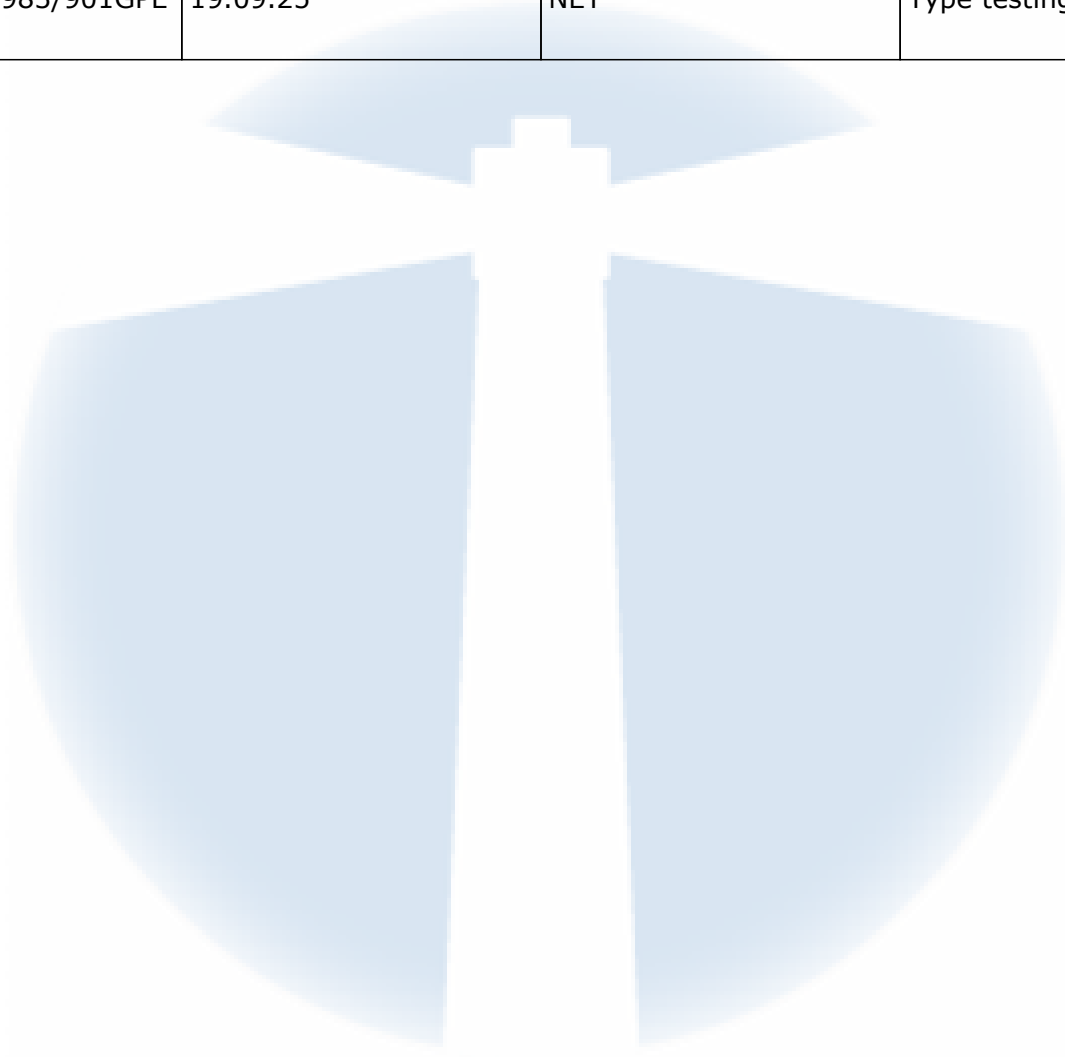
Rune Madsen Fink
Control Officer
BREVIK, NORWAY 07.11.2025
NET Emballasje- og Produkttesting AS
Certification

THE FOLLOWING CLOSURES IS CERTIFIED ACCORDING TO ISO8317:

Name	Drawing	Material inner/outer	Insert
P40-900/901G	12439	HDPE/HDPE	Cone

DOCUMENTS BASED UPON FOR APPROVAL:

Report id.	Date	Issued by	Scope
Report 06951530614	21.08.14	IVM	Type testing
NET16CR40-983/901GPE T	19.09.25	NET	Type testing





CERTIFICATE NO.: NET16CRP40-948/901F
CHILD-RESISTANT PACKAGING

HOLDER OF CERTIFICATE:
Emballator Växjö AB

MANUFACTURER: Emballator Växjö AB, Smedjegatan 8, SE 35246 Växjö, Sweden
CHILD RESISTANT CLOSURE: NET16CRP40-948/901F
ON VERIFIED CONTAINER: 205 ml - 10.000 ml



TEST STANDARD:

An evaluation of the test results has been done in accordance with NET test method ATM003. The test method is accredited in accordance with ISO17025 approved by Norsk Akkreditering. The child-resistant closure is designed for reclosable packages, as child resistant and suitable for adults according to ISO 8317:2015 and all the test results are within the given tolerance range.

**TEST LABORATORY:
ANALYSIS:**

NET AS, Norway
Containers with a valid appendix, combined with P40-948/901F SealPlug, are confirmed as child-resistant and suitable for adults.

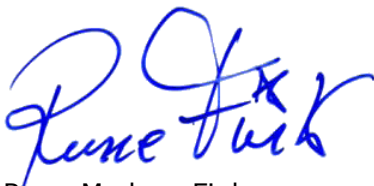
VALIDITY:

This certificate is effective together with a valid appendix from NET for the actual container. The certificate is valid until expire date as long as no modifications are made to package, the material, the dimensions or the closure system.

DATE OF CERTIFICATION: **04.07.2025**

CERTIFICATE IS VALID UNTIL:

31.07.2030



Rune Madsen Fink
Control Officer
BREVIK, NORWAY 04.07.2025
NET Emballasje- og Produkttesting AS
Certification

THE FOLLOWING CLOSURES IS CERTIFIED ACCORDING TO ISO8317:

Name	Drawing	Material inner/outer	Insert
P40-948/901F	12443A	HDPE/HDPE	Sealplug

DOCUMENTS BASED UPON FOR APPROVAL:

Report id.	Date	Issued by	Scope
Report 06951530614	21.08.14	IVM	Type testing





CERTIFICATE NO.: NET16CRP40-948/901G
CHILD-RESISTANT PACKAGING

HOLDER OF CERTIFICATE:
Emballator Växjö AB

MANUFACTURER: Emballator Växjö AB, Smedjegatan 8, SE 35246 Växjö, Sweden
CHILD RESISTANT CLOSURE: NET16CRP40-948/901G
ON VERIFIED CONTAINER: 250 - 10 000 ml



TEST STANDARD:

An evaluation of the test results has been done in accordance with NET test method ATM003. The test method is accredited in accordance with ISO17025 approved by Norsk Akkreditering. The child-resistant closure is designed for reclosable packages, as child resistant and suitable for adults according to ISO 8317:2015 and all the test results are within the given tolerance range.

**TEST LABORATORY:
ANALYSIS:**

NET AS, Norway
Containers with a valid appendix, combined with 948/901G seal plug, are confirmed as child-resistant and suitable for adults.

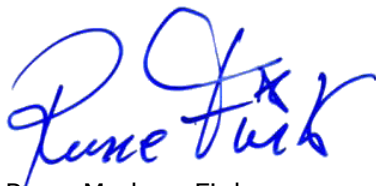
VALIDITY:

This certificate is effective together with a valid appendix from NET for the actual container. The certificate is valid until expire date as long as no modifications are made to package, the material, the dimensions or the closure system.

DATE OF CERTIFICATION: **04.07.2025**

CERTIFICATE IS VALID UNTIL:

31.07.2030



Rune Madsen Fink
Control Officer
BREVIK, NORWAY 04.07.2025
NET Emballasje- og Produkttesting AS
Certification

THE FOLLOWING CLOSURES IS CERTIFIED ACCORDING TO ISO8317:

Name	Drawing	Material inner/outer	Insert
P40-948/901G	12442	HDPE/HDPE	Seal plug

DOCUMENTS BASED UPON FOR APPROVAL:

Report id.	Date	Issued by	Scope
Report 06951530614	21.08.14	IVM	Type testing

