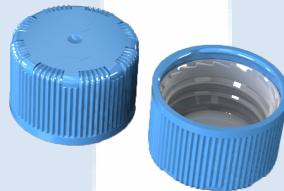




**CERTIFICATE NO.: NET28CR28B**  
**CHILD-RESISTANT PACKAGING**

HOLDER OF CERTIFICATE:  
**Modulpac AB, Sweden**

**MANUFACTURER:** Modulpac AB, Västergatan 16, SE-341 50 Lagan, Sweden  
**CHILD RESISTANT CLOSURE:** 28mm B-Serie  
**ON VERIFIED CONTAINER:** 250 - 2500 ml



**TEST STANDARD:**

An evaluation of the test results has been done in accordance with NET test method ATM003. The test method is accredited in accordance with ISO17025 approved by Norsk Akkreditering. The child-resistant closure is designed for reclosable packages, as child resistant and suitable for adults according to ISO 8317:2015 and all the test results are within the given tolerance range.

**TEST LABORATORY:**

**ANALYSIS:**

NET Emballasje- og Produkttesting AS, Norway  
Containers with a valid appendix combined with 28mm B-serie is confirmed as child resistant and suitable for adults .

**VALIDITY:**

This certificate is effective together with a valid appendix from NET for the actual container. The certificate is valid until expire date as long as no modifications are made to package, the material, the dimensions or the closure system.

DATE OF CERTIFICATION: **02.09.2022**

CERTIFICATE IS VALID UNTIL:

**30.09.2027**



Rune Madsen Fink  
Control Officer  
BREVIK, NORWAY 02.09.2022  
NET Emballasje- og Produkttesting AS  
Certification

**THE FOLLOWING CLOSURES IS CERTIFIED ACCORDING TO ISO8317:**

#: Drawing no	Material	Oblat/Spout cap	Name
1: 7280014	HDPE	Outercap	28YD
2: 7280002	PPC / POM	Innercap	28IO
3: 7280004	PPC / POM	Innercap	28IK
4: 7280001	PPC / POM	Innercap	28IT
5: 7280005	PPC	Innercap	28IK PCO
6: 7280006	PPC	Innercap	28IK PETS
7: 7280010	LLD	Innercap	28SI
8: 7280013	LLD	Innercap	28SIS
9: 7280023	PPC	Innercap	28IT PCO
10: 7280029	PPC	Innercap	28IO PCO
11: 8280016	LLD	Spray insert	Spout Cap 22.2
12: 8280009	LLD	Spray insert	Spout Cap 22.5
13: 8280012	LLD	Spray insert	Spout Cap PETS
14: 8280013	PPC	-	Unmounted
15: 8280013	PET	Oblat	PET-oblat
16: 8280013	PP	Oblat	P-oblat
17: 8280013	PP	Oblat	Vent-oblat
18: 8280013	Alu	Oblat	Alu. oblat to PP-bottle
19: 8280014	LLD		PCO-threads
20: 8280015	LLD		PETS-con

**DOCUMENTS BASED UPON FOR APPROVAL:**

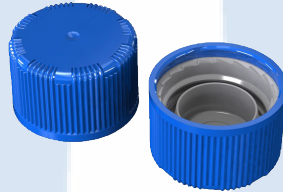
Report id.	Date	Confirmed by
0028CR0103	03.05.2017	Inger Semb
0028CR0103 RE-test	25.08.2022	Therese Rummelhoff



**CHEMICAL RESISTANT  
CERTIFICATE NO.: NET28CR28B**

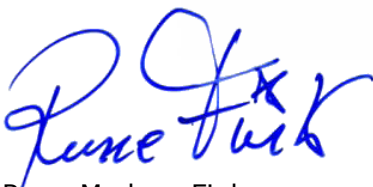
HOLDER OF DOCUMENT:  
**Modulpac AB, Norway**

**APPENDIX NO.:** NET28CC28BI POM  
**TEST STANDARD:** ISO13274:2013 and NET/ATM003  
**TEST LABORATORY:** NET Emballasje- og Produkttesting AS  
**CONFIRMATION:** Test responsible, Therese Rummelhoff  
**CERTIFICATION:** General Manager Rune Fink  
**MANUFACTURER CLOSURE:** Modulpac AB, Västergatan 16, SE-341 50 Lagan, Sweden  
**INFORMATION:** The cap, 28BI POM, has been evaluated and approved as it is no significant effect on the child resistant functionality after chemical compatibility testing with the following test liquids.



UN no. Name and description	Class / packaging group	Results
UN1300 Turpentine substitute	3 / III	1. Approved
UN1202 Diesel	3 / III	1. Approved
Original liquid - Grill lighter fluid	3 / II	1. Approved

FIRST EVALUATION DATE: **15.09.2017** VALID UNTIL: **31.01.2029**



Rune Madsen Fink  
 Control Officer  
 BREVIK, NORWAY, 15.02.2024  
 NET Emballasje- og Produkttesting AS  
 Certification



**THE FOLLOWING CAPS ARE EVALUATED ACCORDING TO ATM003**

Tested package	Name	Part/drawing #	Material	Comments
Outer cap	28BI POM - 28YD	7400014	HD6070 UA	Injection moulding
Inner cap	28BI POM - 28IT	7280001	Amcel KP20	Injection moulding
Spout	28BI POM - 28SI	7280010	LLD	Injection moulding

**TEST CRITERIA**

The packaging was tested with a closure torque on 3 Nm over a period of 180 days, accordance to ISO13274:2013. When periode completed - the tested material was evaluated and comparing to the reference cap. Evaluations was made, with three different grades comparing to the reference cap:

1. Approved, no significant effect on child resistant functionality.
2. Lowered functionality. The relevant features are affected by chemical contents. Double re-test required for certification.
3. Not approved, the cap is no longer child resistant after chemical compatibility testing.

**DOCUMENTS BASED UPON FOR APPROVAL**

Report ID	Date	Confirmed
13274-NET28CR28B/8317-28BI POM	15.09.2017	Inger Semb