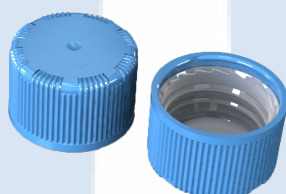




CERTIFICATE NO.: NET28CR28B
CHILD-RESISTANT PACKAGING

HOLDER OF CERTIFICATE:
Modulpac AB, Sweden

MANUFACTURER: Modulpac AB, Västergatan 16, SE-341 50 Lagan, Sweden
CHILD RESISTANT CLOSURE: 28mm B-Series
ON VERIFIED CONTAINER: 250 - 2500 ml



TEST STANDARD:

An evaluation of the test results has been done in accordance with NET test method ATM003. The test method is accredited in accordance with ISO17025 approved by Norsk Akkreditering. The child-resistant closure is designed for reclosable packages, as child resistant and suitable for adults according to ISO 8317:2015 and all the test results are within the given tolerance range.

TEST LABORATORY:
ANALYSIS:

NET Emballasje- og Produkttesting AS, Norway
Containers with a valid appendix combined with 28mm B-series is confirmed as child resistant and suitable for adults .

VALIDITY:

This certificate is effective together with a valid appendix from NET for the actual container. The certificate is valid until expire date as long as no modifications are made to package, the material, the dimensions or the closure system.

DATE OF CERTIFICATION: **02.09.2022**

CERTIFICATE IS VALID UNTIL:

30.09.2027



Rune Madsen Fink
Control Officer
BREVIK, NORWAY 02.09.2022
NET Emballasje- og Produkttesting AS
Certification

THE FOLLOWING CLOSURES IS CERTIFIED ACCORDING TO ISO8317:

#: Drawing no	Material	Oblat/Spout cap	Name
1: 7280014	HDPE	Outercap	28YD
2: 7280002	PPC / POM	Innercap	28IO
3: 7280004	PPC / POM	Innercap	28IK
4: 7280001	PPC / POM	Innercap	28IT
5: 7280005	PPC	Innercap	28IK PCO
6: 7280006	PPC	Innercap	28IK PETS
7: 7280010	LLD	Innercap	28SI
8: 7280013	LLD	Innercap	28SIS
9: 7280023	PPC	Innercap	28IT PCO
10: 7280029	PPC	Innercap	28IO PCO
11: 8280016	LLD	Spray insert	Spout Cap 22.2
12: 8280009	LLD	Spray insert	Spout Cap 22.5
13: 8280012	LLD	Spray insert	Spout Cap PETS
14: 8280013	PPC	-	Unmounted
15: 8280013	PET	Oblat	PET-oblat
16: 8280013	PP	Oblat	P-oblat
17: 8280013	PP	Oblat	Vent-oblat
18: 8280013	Alu	Oblat	Alu. oblat to PP-bottle
19: 8280014	LLD		PCO-threads
20: 8280015	LLD		PETS-con

DOCUMENTS BASED UPON FOR APPROVAL:

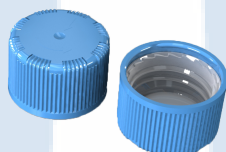
Report id.	Date	Confirmed by
0028CR0103	03.05.2017	Inger Semb
0028CR0103 RE-test	25.08.2022	Therese Rummelhoff



CHEMICAL RESISTANT CERTIFICATE NO.: NET28CR28B

HOLDER OF DOCUMENT:
Modulpac AB, Norway

APPENDIX NO.: NET28CC28B POM
TEST LABORATORY: NET Emballasje- og Produkttesting AS
TEST PERFORMED BY: Therese Rummelhoff
CONTROLLED BY: Rune Fink
MANUFACTURER CLOSURE: Modulpac AB, Västergatan 16, SE-341 50 Lagan, Sweden
APPROVAL: The cap, 28B POM, has been evaluated and approved as it is no significant effect on the child resistant functionality after chemical compatibility testing with the following test liquids.



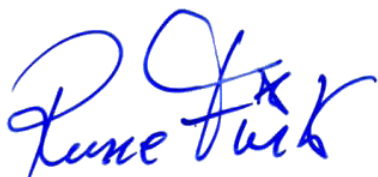
UN no. Name and description	Class / packaging group	Results
UN1300 Mixture of hydrocarbons	3 / III	1. Approved
UN1123 n-Butyl acetat	2 / II	1. Approved
Lutensol FSA 10- BASF	3 / III	1. Approved
UN2789 Acetic acid	8 / II	1. Approved

This appendix is only valid with a valid version of the certificate

TEST STANDARD: All tests are performed in accordance with NET accredited test method ATM003. The test method is accredited in accordance with NS-EN ISO/IEC 17025:2017 approved by Norsk Akkreditering and according to NS-EN ISO 8317:2015 and NS-EN ISO 13274:2013.



FIRST EVALUATION DATE: **08.01.2018** VALID UNTIL: **31.01.2029**



Rune Madsen Fink
Control Officer
BREVIK, NORWAY, 15.02.2024
NET Emballasje- og Produkttesting AS
Certification

THE FOLLOWING CAPS ARE EVALUATED ACCORDING TO ATM003

Tested package	Name	Part/drawing #	Material	Comments
Outer cap	28B POM - 28YD	7400014	HD6070 UA	Injection moulding
Inner cap	28B POM - 28IK	7280004	Amcel KP20	Injection moulding

TEST CRITERIA

The packaging was tested with a closure torque on 3 Nm over a period of 180 days, accordance to ISO13274:2013. When periode completed - the tested material was evaluated and comparing to the reference cap. Evaluations was made, with three different grades comparing to the reference cap:

1. Approved, no significant effect on child resistant functionality.
2. Lowered functionality. The relevant features are affected by chemical contents. Double re-test required for certification.
3. Not approved, the cap is no longer child resistant after chemical compatibility testing.

DOCUMENTS BASED UPON FOR APPROVAL

Report ID	Date	Confirmed
13274-NET28CR28B/8317-28B POM	08.01.2018	Inger Semb