



**PRODUCT APPROVAL OF PACKAGING
FOR TRANSPORTATION OF DANGEROUS GOODS
CERTIFICATE NO.: NET6908A**

HOLDER OF CERTIFICATE:
MPP Sverige AB

4462 kg max

MANUFACTURER: MPP Sverige AB, Fjärås Industriväg 17, 43974 Fjärås

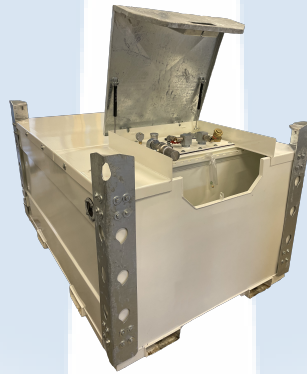
MARKING ON PACKAGING:  **31A/Y/MYY/N
NET6908A - ID/8032/4462**

"MYY" to be replaced with the month and year (last two digits) of manufacture.
"ID" to be replaced by the name or symbol of the manufacturer.
The packaging shall also be appropriately marked in accordance with ADR 6.5.2.2.



PRODUCT:

| Packaging code | Description | Material |
|------------------------------|--------------------------------|----------|
| 31A, steel IBCs, for liquids | Transport Tank Compact Extreme | Steel |



DIMENSIONS:

| # : Capacity, l | L*W*H, mm | Head / Body / Bottom, mm | Drawing |
|-----------------------|------------------|--------------------------|------------------|
| 1: 2880 | 2330*1611*1319 | 5.0 / 5.0 / 5.0 | MPP-TTC300_5 |
| 2: 2126 | 2330*1211*1319 | 5.0 / 5.0 / 5.0 | MPP-TTC200_5 |
| 3: 863 | 1205*1211*1319 | 5.0 / 5.0 / 5.0 | MPP-TTC085_5 |
| 4: 2880 212 AdBlue | + 2330*1611*1319 | 5.0 / 5.0 / 5.0 | MPP-TTC300_5 AdB |
| 5: 2126 165 AdBlue | + 2330*1211*1319 | 5.0 / 5.0 / 5.0 | MPP-TTC200_5 AdB |
| 6: 863 165 Adblue | + 1205*1211*1319 | 5.0 / 5.0 / 5.0 | MPP-TTC085_5 AdB |

**FOR A FILLING TEMPERATURE OF 15 °C,
THE MAXIMUM DEGREE OF FILLING FOR THIS PACKAGING SHALL BE**

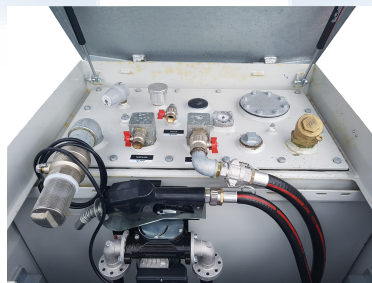
| #: Initial boiling point of the substance | iBP <60 °C | >=60 BP <100 | >=100 BP <200 | >=200 BP <300 | BP >=300 |
|---|---------------|--------------|---------------|---------------|----------|
| | 90% | 92% | 94% | 96% | 98% |
| 1: Degree of filling in liter | 2592 | 2649 | 2707 | 2764 | 2822 |
| 2: Degree of filling in liter | 1913 | 1955 | 1998 | 2040 | 2083 |
| 3: Degree of filling in liter | 776 | 793 | 811 | 828 | 845 |
| 4: Degree of filling in liter | 2592 + Adblue | 2649 | 2707 | 2764 | 2822 |
| 5: Degree of filling in liter | 1913 + Adblue | 1955 | 1998 | 2040 | 2083 |
| 6: Degree of filling in liter | 776 + Adblue | 793 | 811 | 828 | 845 |

CLOSING MECHANISM:

| Closure type | Producer | Drawings | Material | Gasket |
|-----------------------|----------------|------------------|----------|--------|
| Cover with two hinges | MPP Sverige AB | C3-05 Cover | S235JRG2 | - |
| Cover flange, 100 mm | MPP Sverige AB | C3-02 Inner tank | S235JRG2 | Rubber |
| Manhole cover, 150 mm | MPP Sverige AB | C3-02 Inner tank | S235JRG2 | Rubber |

PORT PLATE WITH 13 CONNECTIONS AND 3 DIFFERENT LIFTING POINTS:

| Kit | Description / Drawing | Producer |
|-------------------|-----------------------|----------|
| # 1, left photo | Details in report | MPP |
| # 2, center photo | Details in report | MPP |
| # 3, right photo | Details in report | MPP |





**WLL
1116**



APPROVAL:

The certificate is valid for a maximum of five years, provided no modifications have been made to the packaging design, materials, dimensions, closure system or manner of construction. To ensure validation of the certificate, check the NET website.

NET issues the certification on described product according to delegated authority from Norwegian Directorate for Civil Protection and Emergency Planning (DSB): Legal regulations for Transportation of Dangerous Goods on road and railway - 06/6950-7/BJRU.

NET issues the certification on described product according to delegated authority from Norwegian Maritime Directorate (Sjøfartsdirektoratet) - 200705977-4/5367.1.

REGULATIONS BASED UPON FOR APPROVAL:

UN Recommendations on the Transport of Dangerous Goods.

ADR, European Agreement concerning the International Carriage of Dangerous Goods by Road.

RID, International Regulations on Transport of Dangerous Goods by Rail.

IMDG, International Maritime Dangerous Goods Code, for sea transport.

APPROVAL IS VALID FOR:

The IBC is valid for packaging group II and III, and shall always be used according to the requirements of the applicable UN-code and its packaging instructions.

The following test are performed and approved according to ADR:

6.5.6.4 Bottom lift test

6.5.6.5 Top lift test: WLL 1116 kg, all 4 padeyes shall be used when lifting the IBC

6.5.6.6 Stacking test

6.5.6.7 Leakprooiness test

6.5.6.8 Internal pressure test

6.5.6.9 Drop test

6.5.6.13 Vibration test

| Content | Max. relative density | KG, Max. gross mass / Tare weight, kg | Pressure test, kPa |
|---------------------|-----------------------|---------------------------------------|--------------------|
| 1: Liquids | 1.0 | 4189 / 1304 | 200 |
| 2: Liquids | 1.0 | 3156 / 1071 | 200 |
| 3: Liquids | 1.0 | 1525 / 692 | 200 |
| 4: Liquids + AdBlue | 1.0 | 4462 / 1370 | 200 |
| 5: Liquids + AdBlue | 1.0 | 3426 / 1117 | 200 |
| 6: Liquids + AdBlue | 1.0 | 1809 / 738 | 200 |

DOCUMENTS BASED UPON FOR APPROVAL:

| Report id. | Date | Issued by | Scope |
|------------|------------|-----------|-------------------------------|
| NET6908B | 10.03.2021 | NET | Type approval |
| NET69TE10 | 11.03.2021 | NET | Technical evaluation: 2,3,5,6 |
| NET6908A | 11.03.2021 | NET | Type test |

TEST STANDARD:

All tests are performed in accordance with NET accredited test method ATM001. The test method is accredited in accordance with ISO17025 approved by Norsk Akkreditering and based upon ISO16495.

The packagings shall be manufactured, reconditioned and tested under a quality assurance programme which satisfies NET Certification, in order to ensure that each packaging meets the requirements in ADR and the guidelines in ISO 16106.



BREVIK, NORWAY

19.03.2021 CERTIFICATE IS VALID UNTIL:

31.03.2026


 Geir Morten Johansen
 Certification Officer



 Rune Madsen Fink
 Control Officer

Nordisk Emballasje Testing AS Certification