



**PRODUCT APPROVAL OF PACKAGING  
FOR TRANSPORTATION OF DANGEROUS GOODS  
CERTIFICATE NO.: NET6908B**

HOLDER OF CERTIFICATE:  
**MPP Sverige AB**

**4462 kg max**



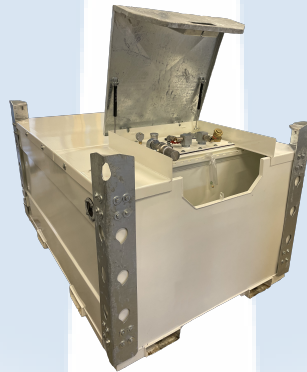
**MANUFACTURER:** MPP Sverige AB, Fjärås Industriväg 17, 43974 Fjärås

**MARKING ON PACKAGING:**  **31A/Y/MYY/N  
NET6908B - ID/8032/4462**

"MYY" to be replaced with the month and year (last two digits) of manufacture.  
"ID" to be replaced by the name or symbol of the manufacturer.  
The packaging shall also be appropriately marked in accordance with ADR 6.5.2.2.

**PRODUCT:**

Packaging code	Description	Material
31A, steel IBCs, for liquids	Transport Tank Compact Extreme	Steel



**DIMENSIONS:**

# : Capacity, l	L*W*H, mm	Head / Body / Bottom, mm	Drawing
1: 2880	2330*1611*1319	5.0 / 5.0 / 5.0	MPP-TTC300_5
2: 2126	2330*1211*1319	5.0 / 5.0 / 5.0	MPP-TTC200_5
3: 863	1205*1211*1319	5.0 / 5.0 / 5.0	MPP-TTC085_5
4: 2880 212 AdBlue	+ 2330*1611*1319	5.0 / 5.0 / 5.0	MPP-TTC300_5 AdB
5: 2126 165 AdBlue	+ 2330*1211*1319	5.0 / 5.0 / 5.0	MPP-TTC200_5 AdB
6: 863 165 Adblue	+ 1205*1211*1319	5.0 / 5.0 / 5.0	MPP-TTC085_5 AdB

**FOR A FILLING TEMPERATURE OF 15 °C,  
THE MAXIMUM DEGREE OF FILLING FOR THIS PACKAGING SHALL BE**

#: Initial boiling point of the substance	iBP <60 °C	>=60 BP <100	>=100 BP <200	>=200 BP <300	BP >=300
	90%	92%	94%	96%	98%
1: Degree of filling in liter	2592	2649	2707	2764	2822
2: Degree of filling in liter	1913	1955	1998	2040	2083
3: Degree of filling in liter	776	793	811	828	845
4: Degree of filling in liter	2592 + Adblue	2649	2707	2764	2822
5: Degree of filling in liter	1913 + Adblue	1955	1998	2040	2083
6: Degree of filling in liter	776 + Adblue	793	811	828	845

**CLOSING MECHANISM:**

Closure type	Producer	Drawings	Material	Gasket
Cover with two hinges	MPP Sverige AB	C3-05 Cover	S235JRG2	-
Cover flange, 100 mm	MPP Sverige AB	C3-02 Inner tank	S235JRG2	Rubber
Manhole cover, 150 mm	MPP Sverige AB	C3-02 Inner tank	S235JRG2	Rubber

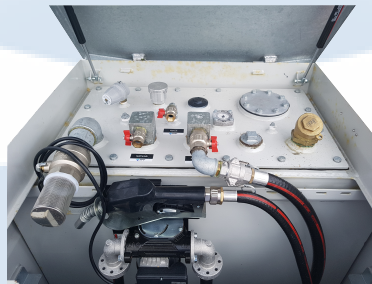
**PORT PLATE WITH 13 CONNECTIONS AND 3 DIFFERENT LIFTING POINTS:**

Kit	Description / Drawing	Producer
# 1, left photo	Details in report	MPP
# 2, center photo	Details in report	MPP
# 3, right photo	Details in report	MPP





WLL  
1116



**APPROVAL:**

The certificate is valid for a maximum of five years, provided no modifications have been made to the packaging design, materials, dimensions, closure system or manner of construction. To ensure validation of the certificate, check the NET website.

NET issues the certification on described product according to delegated authority from Norwegian Directorate for Civil Protection and Emergency Planning (DSB): Legal regulations for Transportation of Dangerous Goods on road and railway - 06/6950-7/BJRU.

NET issues the certification on described product according to delegated authority from Norwegian Maritime Directorate (Sjøfartsdirektoratet) - 200705977-4/5367.1.

**REGULATIONS BASED UPON FOR APPROVAL:**

UN Recommendations on the Transport of Dangerous Goods.

ADR, European Agreement concerning the International Carriage of Dangerous Goods by Road.

RID, International Regulations on Transport of Dangerous Goods by Rail.

IMDG, International Maritime Dangerous Goods Code, for sea transport.

**APPROVAL IS VALID FOR:**

The IBC is valid for packaging group II and III, and shall always be used according to the requirements of the applicable UN-code and its packaging instructions.

The following test are performed and approved according to ADR:

6.5.6.4 Bottom lift test

6.5.6.5 Top lift test: WLL 1116 kg, all 4 padeyes shall be used when lifting the IBC

6.5.6.6 Stacking test

6.5.6.7 Leakprooness test

6.5.6.8 Internal pressure test

6.5.6.9 Drop test

6.5.6.13 Vibration test

Content	Max. relative density	KG, Max. gross mass / Tare weight, kg	Pressure test, kPa
1: Liquids	1.0	4189 / 1304	200
2: Liquids	1.0	3156 / 1071	200
3: Liquids	1.0	1525 / 692	200

4: Liquids + AdBlue	1.0	4462 / 1370	200
5: Liquids + AdBlue	1.0	3426 / 1117	200
6: Liquids + AdBlue	1.0	1809 / 738	200

**DOCUMENTS BASED UPON FOR APPROVAL:**

Report id.	Date	Issued by	Scope
NET6908B	10.03.2021	NET	Type approval
NET69TE10	11.03.2021	NET	Technical evaluation: 2,3,5,6

**TEST STANDARD:**

All tests are performed in accordance with NET accredited test method ATM001. The test method is accredited in accordance with ISO17025 approved by Norsk Akkreditering and based upon ISO16495.

The packagings shall be manufactured, reconditioned and tested under a quality assurance programme which satisfies NET Certification, in order to ensure that each packaging meets the requirements in ADR and the guidelines in ISO 16106.



BREVIK, NORWAY

**18.03.2021** CERTIFICATE IS VALID UNTIL:

**31.03.2026**



Geir Morten Johansen  
Certification Officer



Rune Madsen Fink  
Control Officer

*Nordisk Emballasje Testing AS Certification*