



PRODUCT APPROVAL OF PACKAGING FOR TRANSPORTATION OF DANGEROUS GOODS CERTIFICATE NO.: NET10802A

HOLDER OF CERTIFICATE:
Greif Sweden AB

2000 kg max

MANUFACTURER: Greif Sweden AB, Box 23, SE-311 23 Falkenberg, Sweden

MARKING ON PACKAGING:  **31HA1/Y/MMY/N/NET10802A - ID/3600/1997**

"MMYY" to be replaced with the month and year (last two digits) of manufacture.

"ID" to be replaced by the name or symbol of the manufacturer.

Each IBC shall also be marked according to 6.5.2.2.1 ADR/RID/IMDG, and each inner receptacle shall be marked according to 6.5.2.2.4 ADR/RID/IMDG.



PRODUCT:

Packaging code	Description
31HA1, Composite IBC	Rigid plastics inner receptacle; Greif Sweden NET0359 and outer casing of steel and pallet; Mauser BAM 11027



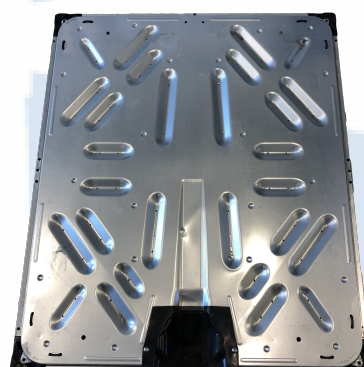
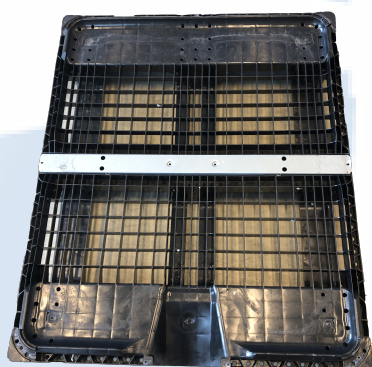
CLOSING MECHANISM:

Closure type	Description	Drawing	Material	Torque
Screw cap #1	150 mm, black/natural	2064co1rev0	HDPE	35 Nm
Screw cap #2	150 mm vented	2001co0rev3	HDPE	35 Nm
Screw cap #3	150 mm vented	TSF-21000100	HDPE	35 Nm
Screw cap #4	150 mm vented	2064co0rev2	HDPE	35 Nm
Screw cap #5	220 mm, black/natural	2000co0rev4	HDPE	35 Nm
Screw cap #6	220 mm	2068co1rev0	HDPE	90 Nm
Screw cap #7	220 mm, vented	2068co0rev0	HDPE	90 Nm
Valve #1	2" integrated nut, butterfly	2017ass0rev5	HDPE/PP/fibreglass	-
Valve #2	2" weldable, butterfly	2019cp1rev0	HDPE/PP/fibreglass	-
Valve #3	2" plunger	2008ass0rev1	HDPE	-
Valve #4	3" integrated nut	2015ass0rev4	HDPE/PP/fibreglass	-
Valve #5, with liner	2" weldable, Butterfly	2019ass0rev5	HDPE	-
Valve #6	2" integrated nut, ball	2055ass0rev0	HDPE/PP/fibreglass	-



INNER PACKAGING/ACCESSORIES:

Type	Description	Drawing	Material
Inner receptacle Ø150	Blow moulded	2003bo0rev11	HDPE
Inner receptacle Ø220	Blow moulded	2003bo0rev11	HDPE
Outer casing	Galvanized pipe section. Lattice-type basket screwed onto a pallet	O-C-11027	Steel
Corner protection	Black sheets of plastic	C-P-11027	HDPE
Plastic pallet, BAM 11027	Blow moulded/Welded	P-P 11027	HDPE
Hybrid skid pallet, BAM 11027	Galvanized steel sheet	H-S-P 11027	Plastic/Steel



DIMENSIONS:

Packaging	Tara weight, kg	Volume, l	Height, mm	Width, mm	Length, mm
IBC, plastic pallet	53.6	1056	1160	995	1210
IBC, hybrid skid pallet	53.7	1056	1180	995	1210

APPROVAL:

The certificate is valid for a maximum of five years, provided no modifications have been made to the packaging design, materials, dimensions, closure system or manner of construction. To ensure validation of the certificate, check the NET website.

NET issues the certification on described product according to delegated authority from Norwegian Directorate for Civil Protection and Emergency Planning (DSB): Legal regulations for Transportation of Dangerous Goods on road and railway - 06/6950-7/BJRU.

NET issues the certification on described product according to delegated authority from Norwegian Maritime Directorate (Sjøfartsdirektoratet) - 200705977-4/5367.1.

REGULATIONS BASED UPON FOR APPROVAL:

UN Recommendations on the Transport of Dangerous Goods.

ADR, European Agreement concerning the International Carriage of Dangerous Goods by Road.

RID, International Regulations on Transport of Dangerous Goods by Rail.

IMDG, International Maritime Dangerous Goods Code, for sea transport.

APPROVAL IS VALID FOR:

The packaging shall always be used according to the requirements of the applicable UN-code and its packaging instructions. The 2" weldable butterfly valve (listed as #5) is only approved with a welded aluminum liner between neck and cap. The following test are performed and approved: Bottom lift-, drop-, leakiness-, internal pressure-, stacking- and vibration test. Compatibility testing has been carried out according to ADR/RID with the content listed below:

Content	Max. relative density	Max. vapour pressure, kPa at +50°C	Packaging group
Water	1.9	114	II and III
Wetting Solution	1.6	114	II and III
Acetic Acid	1.6	114	II and III
n-Butyl acetate	1.5	114	II and III
Mixture of hydrocarbons	1.5	114	II and III
Nitric Acid	1.5	114	II and III

DOCUMENTS BASED UPON FOR APPROVAL:

Report id.	Date	Issued by	Scope
NET0394CX	21.10.2019	NET	Type Approval, cross bottling
NET03TE39	30.10.2019	NET	Technical evaluation, P-r

TEST STANDARD:

All tests are performed in accordance with NET accredited test method ATM001. The test method is accredited in accordance with ISO17025 approved by Norsk Akkreditering and based upon ISO16495 and ISO13274.



PORSGRUNN, NORWAY

07.05.2020 CERTIFICATE IS VALID UNTIL:

31.05.2025



Geir Morten Johansen
Certification Officer



Rune Madsen Fink
Control Officer

Nordisk Emballasje Testing AS Certification