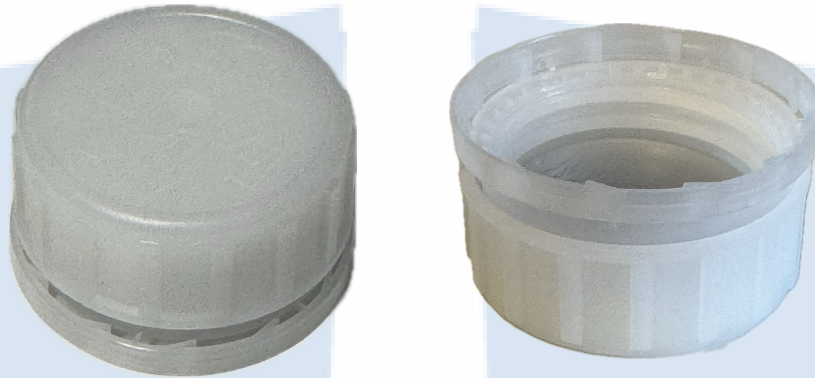




CERTIFICATE NO.: 16CR40-255/901G/ALU
CHILD-RESISTANT PACKAGING

HOLDER OF CERTIFICATE:
Emballator Växjö AB, Sweden

MANUFACTURER: Emballator Växjö AB, Smedjegatan 8, 35246 Växjö, Sweden
CHILD RESISTANT CLOSURE: 16CR40-255/901G/ALU
ON VERIFIED CONTAINER: Emballator Mellerud AB, 5 L



TEST STANDARD:

An evaluation of the test results has been done in accordance with NET test method ATM003. The test method is accredited in accordance with NS-EN ISO/IEC 17025:2017 approved by Norsk Akkreditering. The child-resistant closure is designed for reclosable packages, as child resistant and suitable for adults according to NS-EN ISO 8317:2015 and all the test results are within the given tolerance range.

TEST LABORATORY:
ANALYSIS:

NET AS, Norway
Containers with a valid appendix, combined with 40-255/901G/ALU, are confirmed as child-resistant and suitable for adults.

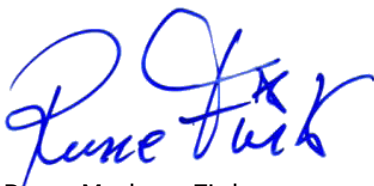
VALIDITY:

This certificate is effective together with a valid appendix from NET for the actual container. The certificate is valid until expire date as long as no modifications are made to package, the material, the dimensions or the closure system.

DATE OF CERTIFICATION: **25.11.2024**

CERTIFICATE IS VALID UNTIL:

30.11.2029



Rune Madsen Fink
Control Officer
BREVIK, NORWAY 25.11.2024
NET Emballasje- og Produkttesting AS
Certification

DOCUMENTS BASED UPON FOR APPROVAL:

Report id.	Date	Issued by	Scope
NET16CR-40-255/901G/ PET	25.11.2024	NET	Type testing
NET16CR-40-255/901G/ ALU	03.09.2024	NET	Wad

