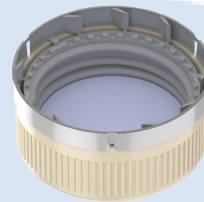
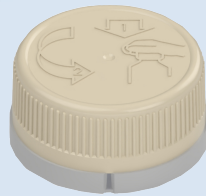




**CERTIFICATE NO.: NET16CR40-983/901F-PET
CHILD-RESISTANT PACKAGING**

HOLDER OF CERTIFICATE:
Emballator Växjö AB

MANUFACTURER: Emballator Växjö AB, Smedjegatan 8, SE 35246 Växjö, Sweden
CHILD RESISTANT CLOSURE: NET16CR40-983/901F-PET
ON VERIFIED CONTAINER: 250ml - 10 000 ml



TEST STANDARD:

An evaluation of the test results has been done in accordance with NET test method ATM003. The test method is accredited in accordance with ISO17025 approved by Norsk Akkreditering. The child-resistant closure is designed for reclosable packages, as child resistant and suitable for adults according to ISO 8317:2015 and all the test results are within the given tolerance range.

**TEST LABORATORY:
ANALYSIS:**

NET AS, Norway

VALIDITY:

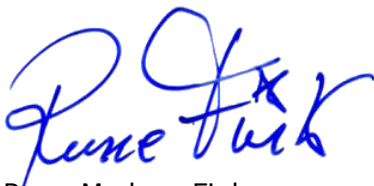
Containers with a valid appendix, combined with 40mm 983/901F PET, are confirmed as child-resistant and suitable for adults.

This certificate is effective together with a valid appendix from NET for the actual container. The certificate is valid until expire date as long as no modifications are made to package, the material, the dimensions or the closure system.

DATE OF CERTIFICATION: **11.07.2025**

CERTIFICATE IS VALID UNTIL:

31.07.2030



Rune Madsen Fink
Control Officer
BREVIK, NORWAY 11.07.2025
NET Emballasje- og Produkttesting AS
Certification

THE FOLLOWING CLOSURES IS CERTIFIED ACCORDING TO ISO8317:

Name	Drawing	Material inner/outer cap	Wad
983/901F PET	12446A	HDPE/HDPE	EPE/ PET

DOCUMENTS BASED UPON FOR APPROVAL:

Report id.	Date	Issued by	Scope
Report 06951530614	21.08.2014	IVM	Type testing
NET16CR40auth	01.07.2025	NET	Type approval

